



Faculty of  
Health Sciences

BECOME **GREATER**  
TODAY **THAN ...**

#MyNWU | #GreaterThan



NORTH-WEST  
UNIVERSITY

WELCOME  
TO  
CONSUMER  
SCIENCES





## Welcoming / Presentation

### 4. Curriculum Control Presentations

- Curriculum Control is to ensure that all the modules / subjects in the programme are on the registration form.
- **View your Curriculum Control Presentation of your specific programme for all the relevant information before registering.**

► Psychology

► Social Work

► Human Movement Sciences

▼ **Consumer Sciences**

Bachelor of Consumer Sciences Welcoming

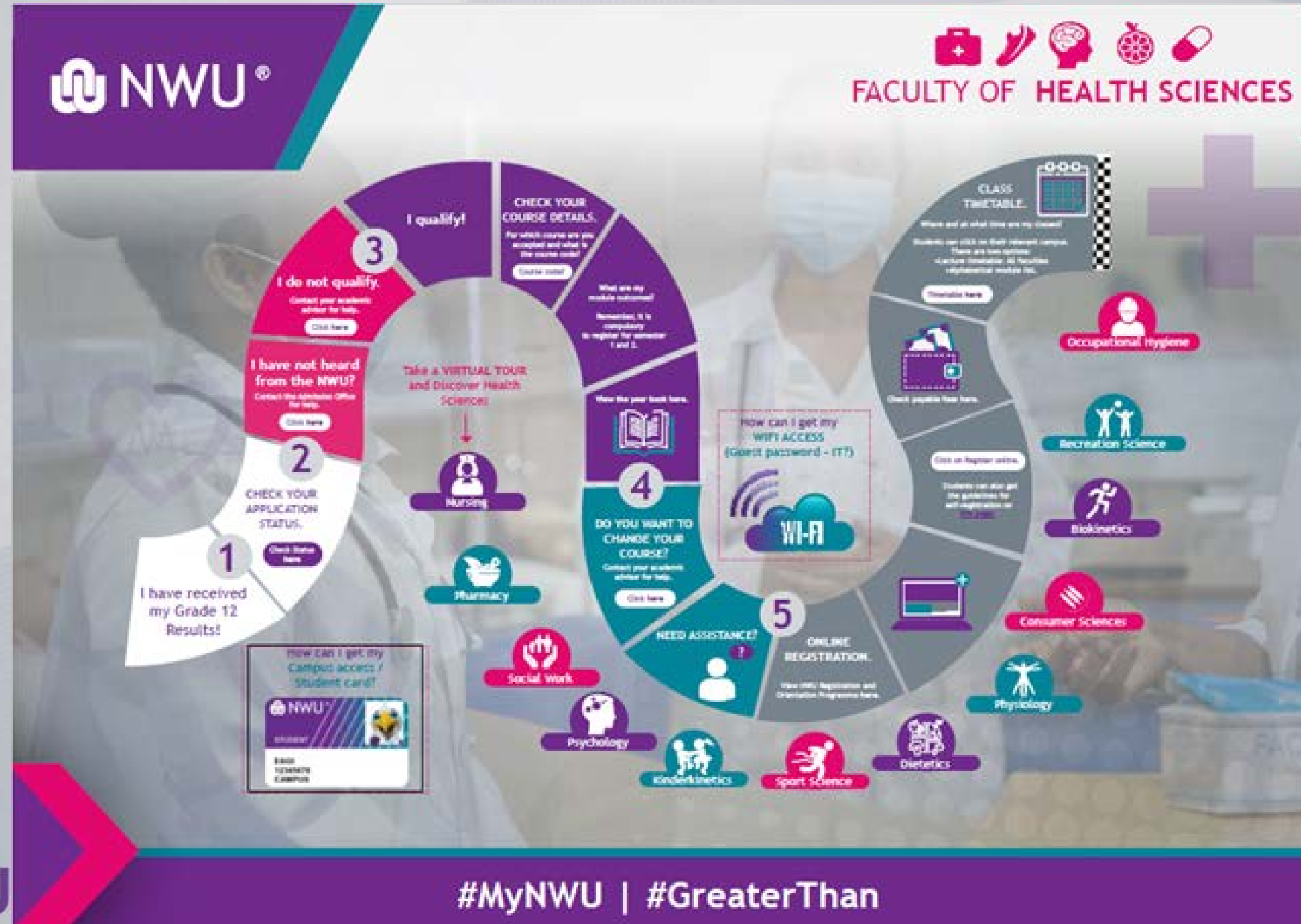
Bachelor of Consumer Sciences Presentation





click  
here

## Registration / Registrasie







There are 3 main qualification options to choose from  
In the food and fashion qualification options, you will be able to further choose between a supply or communication option

Bachelor of Consumer Studies  
(3 Year)  
8EF H01 (G301P)

Bachelor of Consumer Sciences in **Fashion** Retail Management  
(4 Year)

Bachelor of Consumer Sciences in **Food** Product Management  
(4 Year)

This is a special code, the programme and curriculum code, that is linked to the qualification / programme that you choose

Bachelor of Consumer Sciences in Fashion Retail Management with **fashion communication**  
(8DT K02 – G401P)

Bachelor of Consumer Sciences in Fashion Retail Management with **fashion supply**  
(8DT K01 – G401P)

Bachelor of Consumer Sciences in Food Product Management with **food communication**  
(8DS K02 – G401P)

Bachelor of Consumer Sciences in Food Product Management with **food supply**  
(8DT K01 – G401P)





## The Consumer Scientist helps: / Die Verbruikerswetenskaplike help:

- Consumers are not exploited
- Make informed choices
- Put emotional fake news in perspective
- Resources are better utilized (conscious consumption)
- Utilizing and improving product offerings in the store environment
- Value and quality chain are maintained
- Consumers are aware of their legal rights
- Verbruikers nie uitgebuit word nie
- Ingeligte keuses kan maak
- Plaas emosionele fopnuus in perspektief
- Hulpbronne beter benut word (bewustelike verbruik)
- Benutting en verbetering van produkaanbiedinge in die winkelomgewing
- Waarde- en kwaliteitsketting gehandhaaf word
- Verbruikers bewus is van hulle wetlike regte



**Focus:**

The ideas, needs, behaviour and decision making processes of the SA consumer

**Fokus:**

Die idees, behoeftes, gedrag en besluitnemingsprosesse van die SA verbruiker





***What to do with it:***

Retail & manufacturing industry

Consumer research

Own business

***Om wat mee te doen:***

Kleinhandel & vervaardingsindustrie

Verbruikersnavorsing

Eie onderneming





## Education:

Education (PGES) NB extra modules during year 2 and 3 – contact Mrs Beula de Beer at Faculty of Education (beula.debeer@nwu.ac.za)

## Onderwys:

Onderwys (NGOS) NB ekstra modules in studiekejaar 2 en 3 – kontak Mev Beula de Beer by Opvoedkunde

***You need to pass all the 1st to 3rd year modules before you can commence with your 4th study year.***

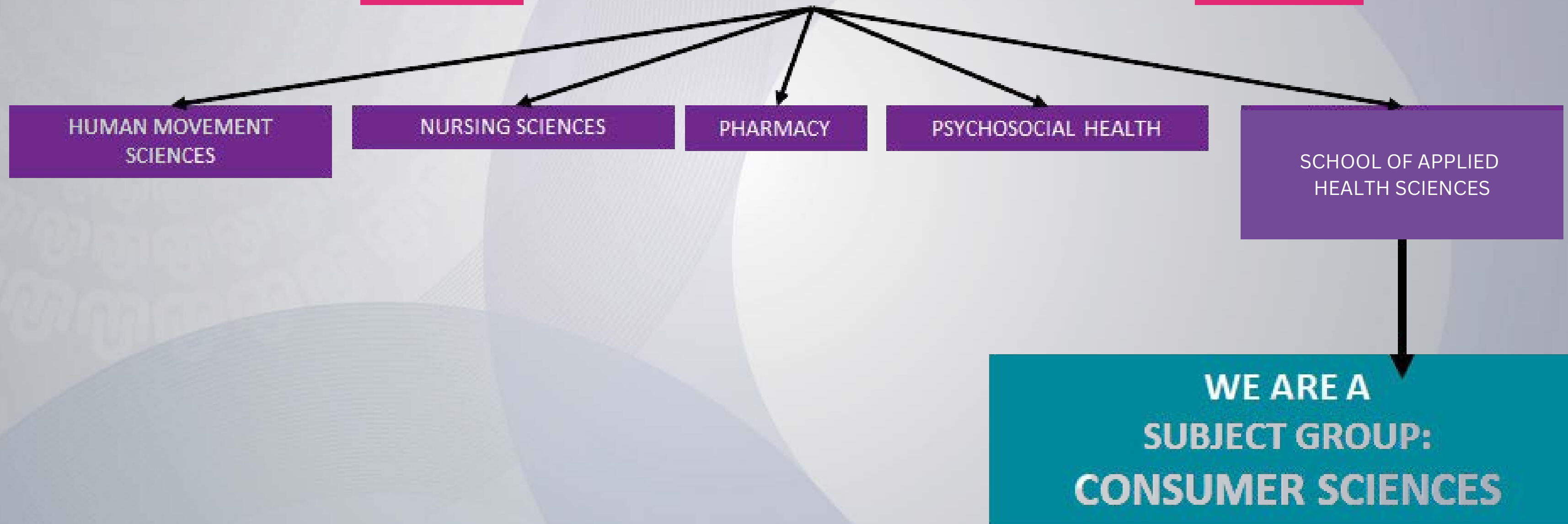
***Jy moet al die 1ste tot 3de jaar modules slaag voordat jy met jou 4de studiekejaar kan voortgaan.***



North-West University

There are 8 Faculties and we fall under the **FACULTY OF HEALTH SCIENCES**

In the **FACULTY** OF HEALTH SCIENCES there are different **SCHOOLS**







## How does it work? / Hoe werk dit?



Lecturers presenting classes: / Lektore wat klasaanbied:



## How does it work? / Hoe werk dit?



Dr Neoline le Roux  
*Subject Leader*  
neoline.leroux@nwu.ac.za



Prof Annchen Mielmann  
*Programme Leader*  
annchen.mielmann@nwu.ac.za



Mrs Annemie Niemann  
*1st year guardian: **Fashion***  
annemie.niemann@nwu.ac.za



Miss Carike Brits  
*1st year guardian: **Food***  
23410868@nwu.ac.za







## How does it work? / Hoe werk dit?

<u>Year book</u> <u>Faculty rules (A-rules)</u>	<u>Jaarboek</u> <u>Fakulteitreëls (A-reëls)</u>
Modules = subjects (4-6 / semester)	Modules = vakke (4-6/ semester)
Assessment week & Exam* <i>* Participation mark + Exam mark = Module mark</i>	Assesseringsweek & Eksamen* <i>* Deelnamepunt + Eksamenpunt = Modulepunt</i>
<b>Class attendance:</b> activities contribute to marks – also applicable to online environment. Participate and prepare for class.	<b>Klasbywoning:</b> aktiwiteite in klas dra by tot punte – geld ook in die aanlynomgewing. Lewer insette en doen voorbereiding.
<b>IMPORTANT</b> <i>Excuses for not attending class are determined by the A-rules of the NWU. Residence functions, weddings and birthdays are not a valid excuse.</i>	<b>IMPORTANT</b> <i>Verskonings om nie klas by te woon nie word deur die A-reëls van die NWU bepaal. Koshuisfunksies, troues en verjaarsdae is nie 'n geldige verskoning nie.</i>





## How does it work? / Hoe werk dit?

All the information is on eFundi and in the  
study guides

/

Alle inligting is op eFundi en in studiegidse

The eFundi logo features the word 'eFundi' in white bold font on a teal background, with a red swoosh above the 'i'.

**eFundi**







## How does the modules work? / Hoe werk die modules?

- It is important to work hard and **pass all your modules**
- Modules may be prerequisite for following modules, you need to re-do and pass those modules before you can continue. Time table clashes will prevent you to take modules
- **Module code** (eg CSOS 111 Design Studies)
- Each module also have a certain number of credits  
**Credits** indicate the **number of hours** that the module will take to complete, eg a 12 credit module needs approximately 120 hours to master the module
- Dit is belangrik om hard te werk en **al jou modules te slaag**
- Modules kan voorvereiste vir 'n volgende module wees - as jy 'n module druip moet jy die module herhaal en deurkom voor jy met opvolgmodules kan voortgaan. Roosterbotsings veroorsaak dat jy modules nie kan neem nie
- **Modulekode** (bv CSOS 111 Ontwerpstudies)
- Elke module het ook 'n sekere aantal krediete.  
**Krediete** dui die **benaderde aantal ure** wat jy gaan benodig om die module te bemeester bv 'n 12 krediet module is, sal ongeveer 120 ure neem

## Module name and code / Module naam en kode

Bachelor of Consumer Sciences in Food  
Product Management with Food  
Communication  
8DS K02  
G401P

YEAR 1

SEMESTER 1

ACCS 111	18	Financial accounting (special)
ALDA/E 111	-	Academic literacy development
CSFD 111	12	Food components and processes
CSOS 111	8	Design studies
FLGX 114	12	Introductory physiology for BA and BSc Consumer Sciences
NUTB 112	12	Introduction to nutrition

SEMESTER 2

ALDA/E 21	12	Academic literacy development
BMAN 121	12	General management
CSFD 121	12	Food groups and systems: Plant
COMS 124	12	Introduction to corporate communication
NUTB 121	12	Nutrients

- You will start each semester with new modules (subjects)*
- In the 2nd semester, the middle number of your modules will always be a 2; the 1st number refers to the year level; so this year all your module numbers start with a 1*
- The yellow-colored modules = 'majors'*

### Textbooks:

*Consult each module's lecturer*

*You can use secondhand books, if available*

*Always try to keep your majors' textbooks*

- Jy gaan elke semester met nuwe modules (vakke) begin
- In die 2de semester gaan jou modules se middelste nommer altyd 'n 2 wees; die 1ste nommer verwys na die jaarvlak; so hierdie jaar begin al jou module nommers met 'n 1
- Die geel gekleurde modules = 'hoofvakke'

### Handboeke:

Hoor by elke module se lektor

Jy kan tweedehandse boeke gebruik, indien beskikbaar

Probeer altyd om jou hoofvakke se handboeke te hou





# Learnerships / Leerderskappe

**Work place experience / Werksplekervaring**

3 WILL Modules

CSCP272

CSCP372

CSCP472



Compulsory, information will be provided later.

Verpligtend, inligting sal later verskaf word.





## Serious matters / Ernstige sake

**Take notice of the NWU Policy: / Neem kennis van NWU Beleid:**

Plagiarism and other forms of Academic Dishonesty and Misconduct /  
Plagiaat en ander vorme van Akademiese Oneerlikheid en Wangedrag

[http://www.nwu.ac.za/webfm\\_send/25355](http://www.nwu.ac.za/webfm_send/25355)

***Falsification of doctors' letters is a serious offense and can lead to suspension / Vervalsing van doktersbriewe is 'n ernstige oortreding en kan tot skorsing lei***





# Serious matters / Ernstige sake

**Academic dishonesty** / Plagiarism can lead to formal disciplinary steps /  
**Akademiese oneerlikheid** / Plagiaat kan tot formele dissiplinêre stappe lei

**NWU Student Disciplinary Office / NWU Studente Dissiplinêre Kantoor**





On a personal level: Is this going to be an adaption?  
/ Op 'n persoonlikevlak: Gaan dit 'n aanpassing  
wees?

**YES! / JA!**

- Work load more than in school / Werkslading is meer as op skool
- Expecting more self study & group work / Meer selfstudie & groepswerk word verwag
- Most study material in English / Meeste studiemateriaal is in Engels





# How can I achieve success? / Hoe kan ek sukses bereik?

- Your success depends ONLY on yourself! /  
Jou sukses hang NET van jouself af!
- Plan, organize, schedule class and work times each day /  
Beplan, organiseer, skeduleer klas- en werktyd elke dag
- Make sure you understand the work, contact the lecturer when uncertain of what's expected / Maak seker jy verstaan die werk, kontak lektor indien iets onduidelik is



## How can I achieve success? / Hoe kan ek sukses bereik?

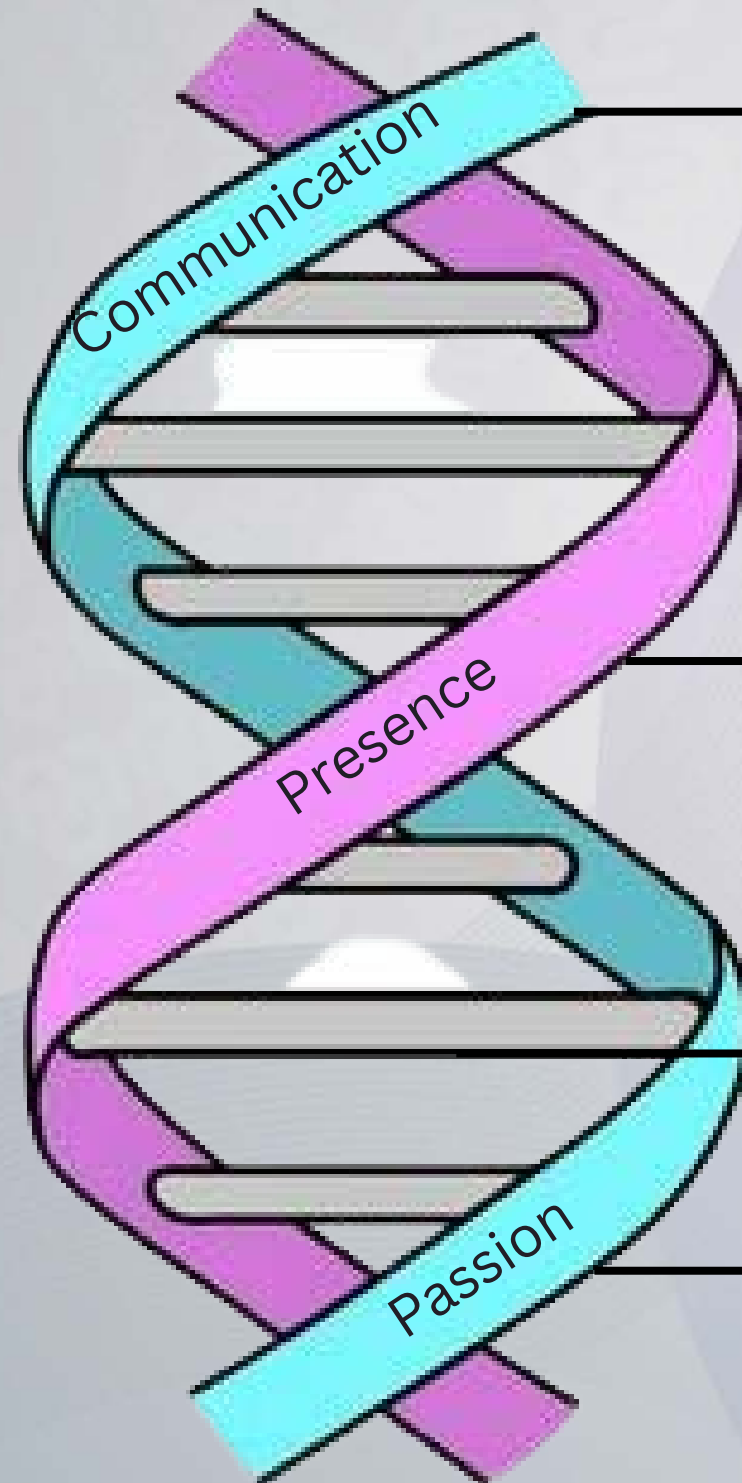
- Make friends with other students who share your goals. / Maak vriende met ander studente wat dieselfde doelwitte as jy het.
- Don't isolate yourself! / Moenie jouself afsonder nie!







# CP<sup>2</sup>R



## Communication / Kommunikasie

- Verbal communication / Verbale kommunikasie
- Non-verbal communication / Nie-verbale kommunikasie

## Presence / Teenwoordigheid

- Who you are / Wie jy is
- Dress code / Kleredrag

## Responsibility / Verantwoordelikheid

- Active participation / Aktiewe deelname

## Passion & initiatives / Passie & inisiatief



## Personal details / Persoonlike besonderhede

- Every student has a file - complete info: email address & passport photo /
- Elke student het 'n lêer - voltooi info: epos adres & paspoortfoto
- Serious illness/ allergies/ disability? / Ernstige siekte/ allergie/ gestremdheid?
- Can't find your class or need help? / Kry nie jou klas nie of benodig hulp?
- All information will be confidential / Alle inligting word vertroulik hanteer
- Contact us rather sooner than later! / Kom praat / kontak ons!

Enquiries/ info needed / student requests: Contact us: /  
Navrae/ inligting benodig/ studenteversoeke: Kontak ons:  
**018 299 2470**

Come visit us in Building F15, 109 / Kom sien ons in Gebou F 15, 109  
Mrs/Mev Michelle Brink (Admin)

