

Psychology
Potchefstroom Campus
School of Psychosocial Health

BECOME **GREATER** TODAY **THAN** ...

#MyNWU | #GreaterThan



FACULTY OF
HEALTH SCIENCES

Welcome to PSYCHOLOGY



Prof. Karel Botha
Subject Group Leader
Karel.Botha@nwu.ac.za



Congratulations!

You were accepted for one of the below degrees:

**Bachelor of Arts
with...**



**Psychology and Geography and
Environmental Management**

1GB H10, G301P

**Psychology and Tourism
management**

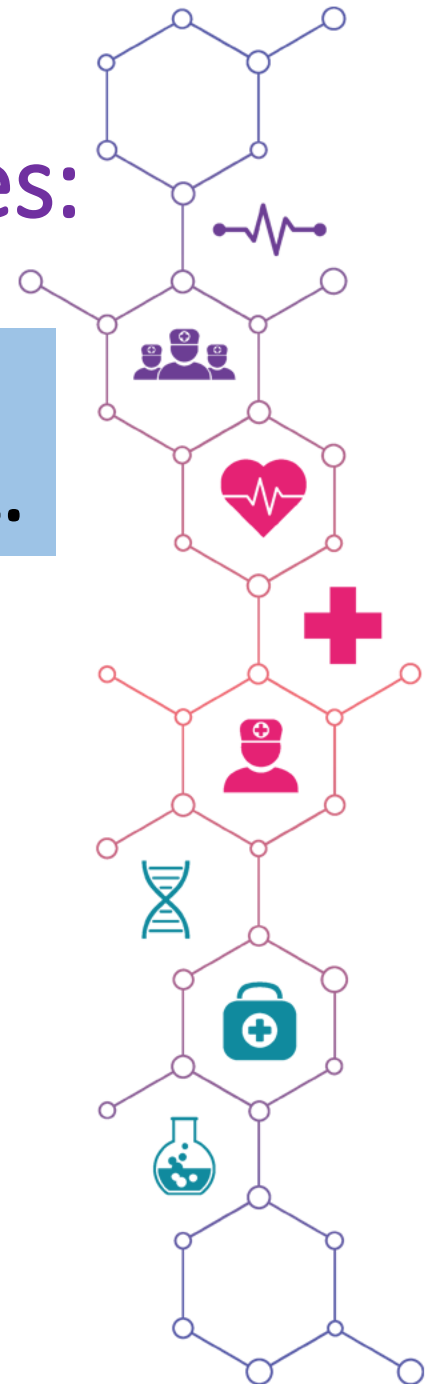
1GB H11, G301P

**Bachelor of Arts in
Behavioural Sciences with...**



**Psychology and Labour
Relations Management**

1GR H02, G301P/V



Online Registration

- Your programme is structured. There might be choice modules in your programme. Refer to your specific programme for more information on this.
- These choice modules are indicated in *italics* in the excerpts of the yearbooks in this presentation.
- You will register for BOTH semesters of the 1st year.



Navigating the NWU Website



About Us ▾ Study at NWU ▾ Teaching and Learning ▾ Research and Innovation Library News & Media ▾

English Afrikaans Setswana

Current Students ▾ Contact us

VIRTUAL TOUR
EXPERIENCE THE NWU NOW!

NWU Virtual Tour

Current Students ▾

Contact us

- Account enquiries
- Career Centre
- Class timetables
- eFundi
- Exam results
- Exam and assessment timetables
- Graduation ceremonies
- Health Centres
- Important dates
- Personal Exam timetable
- Participation Marks
- Registration
- Student Academic Lifecycle Administration
- Maintenance Request
- Sport
- Student Counselling and Development

Yearbooks

<http://www.nwu.ac.za/>



Where can you find information regarding your programme and modules?

- A complete outline of your programme and the modules it contains is available in the undergraduate yearbook of the Faculty of Health Sciences.

<http://studies.nwu.ac.za/studies/yearbooks>



Faculty of Health Sciences

Undergraduate

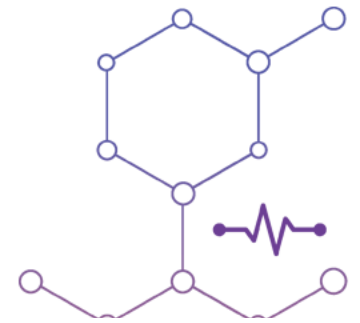
Fakulteit Gesondheidswetenkappe

Voorgraads

2023
Yearbook



Navigating the Yearbook to find information



NWU[®]	
GENERAL ACADEMIC RULES	
Reference Number	7P
Accountable executive manager	Registrar
Policy Owner	Registrar
Responsible division	Registrar
Status	First approval on 21 September 2017 The following table lists revisions: March 2018 – A-Rule 5.11.5.1 March 2019 – A-Rule 4.11.5.2 June 2019 – A-Rules 1.15.13, 4.2.3 and 5.9.4 March 2020 – A-Rules 4.11.5.1.3, 4.11.5.1.4, 4.11.5.1.5, 4.11.5.1.6, 5.11.5.1.3, 5.11.5.1.4, 5.11.5.1.5 and 5.11.5.1.6 March 2020 – Glossary and abbreviations
Approved by	Council
Date of approval	21 September 2017 with revisions in March 2020
Review date	2022

<http://studies.nwu.ac.za/studies/yearbooks>

Important to read on Page 1

General Academic rules (A-rules)

Page
1

HSC.1 **FACULTY RULES**
HSC.1.1 **AUTHORITY OF THE GENERAL RULES**

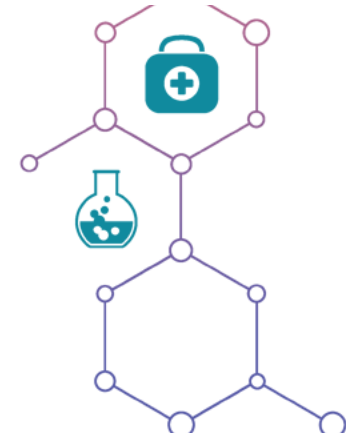
The faculty rules valid for the different qualifications, programmes and curricula of this faculty and contained in this faculty calendar are subject to the General Rules of the University, as determined from time to time by the Council of the University on recommendation by the Senate. The faculty rules should therefore be read in conjunction with the General Rules.

http://www.nwu.ac.za/sites/www.nwu.ac.za/files/files/i-governance-management/policy/Policies%20-%202020%20Update/A-Rules/7P_A-Rules_2020_P.pdf

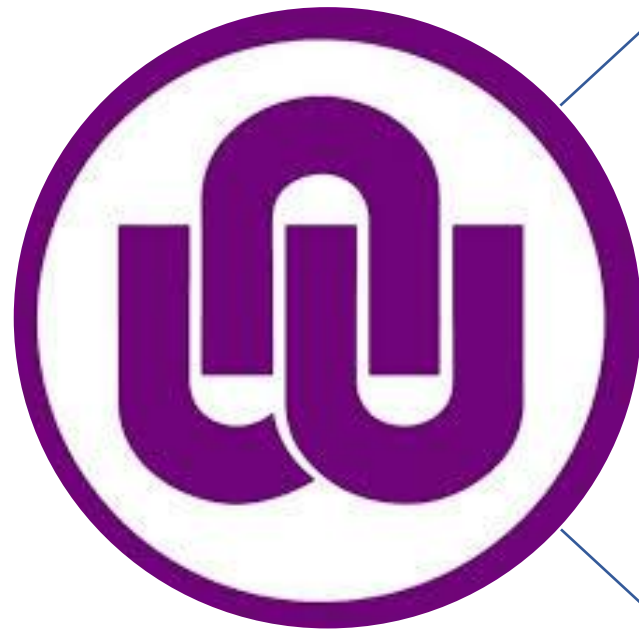
Page
4

MINIMUM REQUIREMENTS

QUALIFICATION	PROGRAM	REQUIREMENTS	APS	CAMPUS
Bachelor of Arts WITH	Psychology and Geography and Environmental Management 1GB H10, G301P Duration: 3 years	<ul style="list-style-type: none"> At least a level 4 (50-59%) mark for the first (home) language Mathematical Literacy level 5 (60-69%) Academic paper selection 	26	Potchefstroom Full-time Contact



Psychology modules



1st year

- PSYC111 Introduction to Psychology
- PSYC121 Social & community Psychology

2nd year

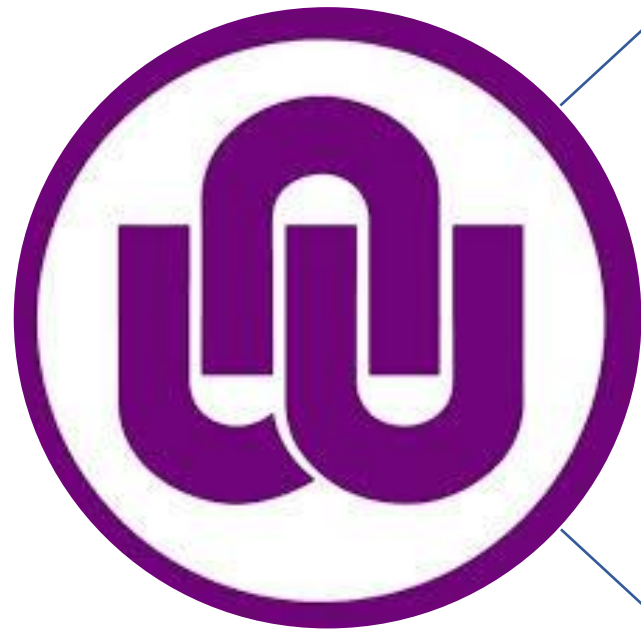
- PSYC211 Developmental Psychology
- PSYC212 Personality Psychology
- PSYC221 Positive Psychology

3rd year

- PSYC311 Psychopathology
- PSYC312 Research & Psychometry
- PSYC321 Basic counselling & ethical conduct
- PSYC323 Community & Indigenous Psychology



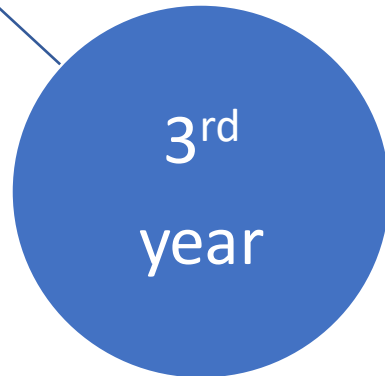
Geography modules



- GEOG111 Introduction to Physical Geography
- GEOG121 Introduction to Human Geography



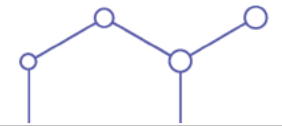
- GEOG211 Physical Geography
- GEOG221 Human Geography



- GEOG311 GIS and Remote Sensing
- GEOG321 Applied Geography



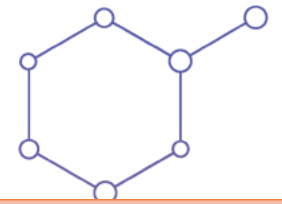
Psychology & Geography and Environmental Management



	YEAR LEVEL 1		YEAR LEVEL 2		YEAR LEVEL 3	
Semester 1	PSYC 111	12	PSYC 211	16	PSYC 311	16
	GEOG 111	12	PSYC 212	16	PSYC 312	16
	LARM 112	12	GEOG 211	16	GEOG 311	32
	SOCY 111	12	<i>LARM 212 / SOCY 211</i>	16	WVLS 317	12
	TMBP 111	12				
	ALDA/E 111	-				
	TOTAL CREDITS SEM 1	60	TOTAL CREDITS SEM 1	64	TOTAL CREDITS SEM 1	76
Semester 2	PSYC 121	12	PSYC 221	16	PSYC 321	16
	GEOG 121	12	GEOG 221	16	PSYC 323	16
	<i>IOPS 121 / SOCY 121</i>	12	<i>LARM 221 / SOCY 221</i>	16	GEOG 323	32
	TMBP 122	12	WVGW 222	12		
	ALDA/E 122	12				
	TOTAL CREDITS SEM 2	60	TOTAL CREDITS SEM 2	60	TOTAL CREDITS SEM 2	64
	TOTAL CREDITS YR 1	120	TOTAL CREDITS YR 2	124	TOTAL CREDITS YR 3	140
					384	



Making sense of all information here



MODULES:

The modules/subjects you need register for in your first year. Each module has a module code that is linked to certain module outcomes.

Every module is indicated with a code for easy referencing

Psychology modules start with PSYC.

The first number of the code indicates the year level (1 = 1st year) and the second number indicated the semester (2 = 2nd semester).

The complete list of modules that you need to complete to graduate is in your Programme (see next slide)

Module outcomes

In order to pass a module, you need to master the outcomes. You can find all the module outcomes at the end of the yearbook.

Pages 171-178

YEAR LEVEL 1		
First semester		
Module code	Type	Cr
ALDA/E111#	A	-
GEOG111	H	12
LARM112	X	12
PSYC111	H	12
SOCY111	X	12
TMBP111	X	12
Total		60
1 st semester		
YEAR LEVEL 1		
Second semester		
Module code	Type	Cr
ALDA/E122#	X	12
GEOG121	H	12
Select ONE:	X	12
IOPS121		
SOCY121		
PSYC121	H	12
TMBP122	X	12
Total 2nd semester		60
Total Year Level 1		120

Credits (Cr): Weight of each module. To successfully obtain your degree you need to obtain 384 credits at the end of your three years. This is done by passing modules.

It also indicates the average amount of study hours required to master the content. 1 credit = 10 hours thus 12 credits equals 120 study hours.

Module type: Code H, X or A

H - indicates all your majors

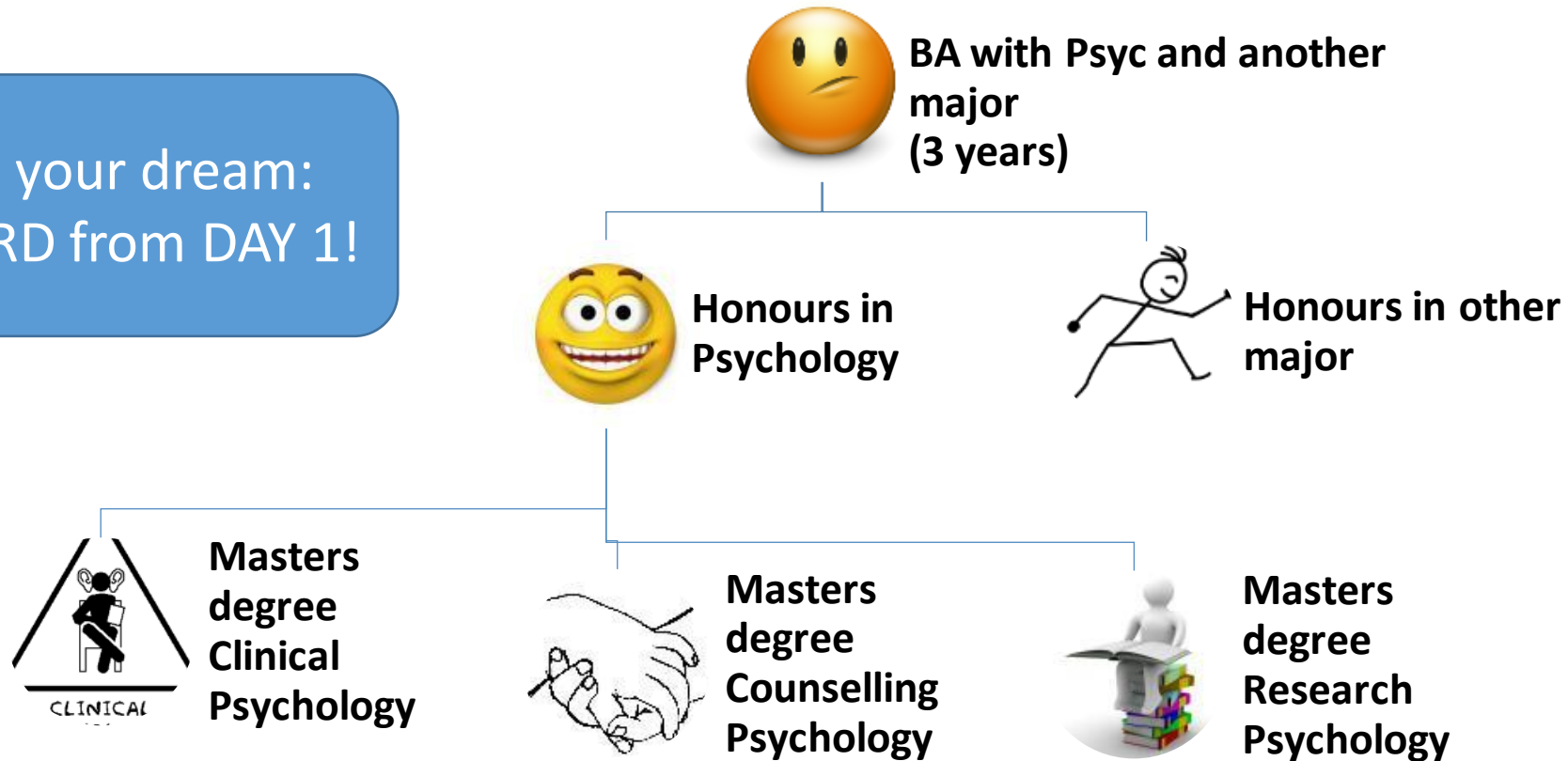
X - modules essential for your degree but not a major

A - code given for additional modules

You have to make a choice here – either IOPS121 or SOCY121. See the yearbook for more information.

How do I become a Psychologist?

If this is your dream:
Work HARD from DAY 1!



eFundi

Once you are registered, you will have access to eFundi.

All your academic information will be communicated via eFundi and details about each module can be found in the Study guide.

NWU home page:

Current Students ▾

Contact us

Account enquiries

Career Centre

Class timetables

eFundi

Exam results

Exam and assessment timetables

Graduation ceremonies

Health Centres

Important dates

Personal Exam timetable

Participation Marks

Registration

Student Academic Lifecycle Administration

Maintenance Request

Sport

Student Counselling and Development

Yearbooks



<https://efundi.nwu.ac.za/portal/>

Be ready to adapt and to succeed!

- Important to note: Workload will be much more than in school
- Whether you cope, adapt and succeed **depends on yourself**
- Take responsibility for your work - plan, organize, schedule class and work times each day
- Make sure you understand the work, **contact the lecturer when uncertain of what's expected**
- Make friends with other students who share your goals
- Use every opportunity to learn and develop



Thank you!

Look out for information sessions in February

All of the best with your studies!

