

Psychology
Potchefstroom Campus
School of Psychosocial Health

BECOME **GREATER** TODAY **THAN ...**

[#MyNWU](#) | [#GreaterThan](#)



FACULTY OF
HEALTH SCIENCES

Welcome to PSYCHOLOGY



Prof. Karel Botha
Subject Group Leader
Karel.Botha@nwu.ac.za



Congratulations!

You were accepted for one of the below degrees:

**Bachelor of Arts
with...**



**Psychology and Geography and
Environmental Management**

1GB H10, G301P

**Psychology and Tourism
management**

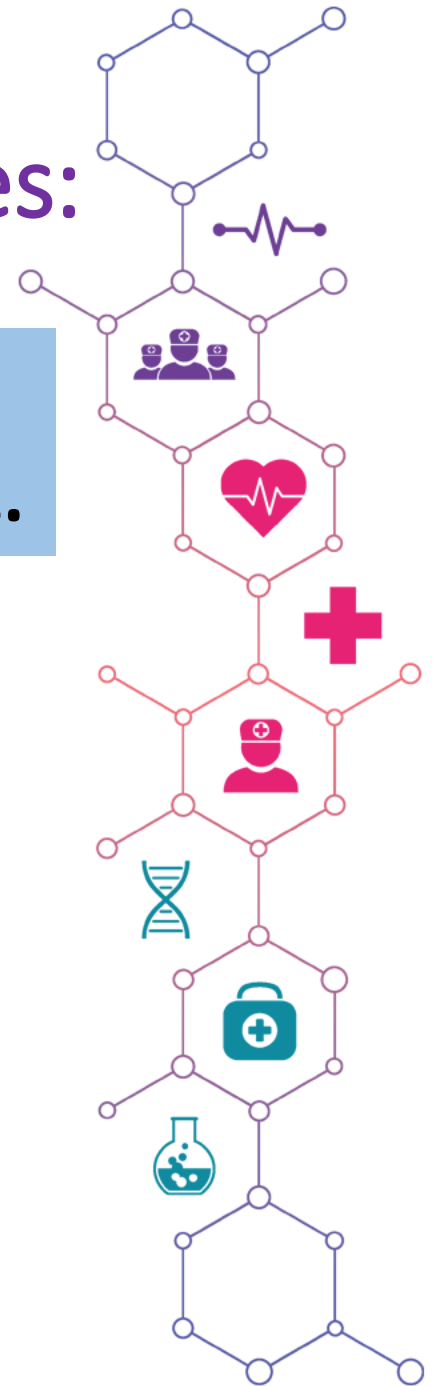
1GB H11, G301P

**Bachelor of Arts in
Behavioural Sciences with...**



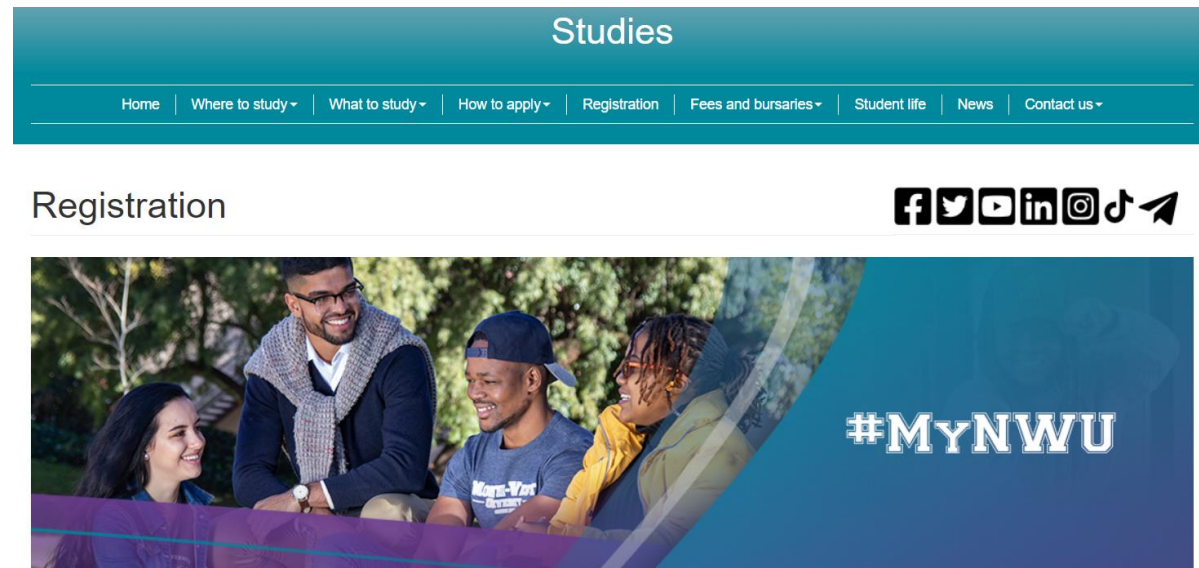
**Psychology and Labour
Relations Management**

1GR H02, G301P/V



Online Registration

- Your programme is structured. There might be choice modules in your programme. Refer to your specific programme for more information on this.
- These choice modules are indicated in *italics* in the excerpts of the yearbooks in this presentation.
- You will register for BOTH semesters of the 1st year.



The screenshot shows the 'Studies' section of a website. At the top, there is a teal navigation bar with the word 'Studies' in white. Below it is a horizontal menu with links: Home, Where to study, What to study, How to apply, Registration, Fees and bursaries, Student life, News, and Contact us. The 'Registration' link is highlighted. Below the navigation bar, the word 'Registration' is displayed in a large font. To the right of 'Registration' are social media icons for Facebook, Twitter, YouTube, LinkedIn, Instagram, and TikTok. Below this is a banner image featuring four diverse students (two men and two women) smiling and talking. The hashtag '#MyNWU' is overlaid on the right side of the banner in white text.



Navigating the NWU Website



About Us ▾ Study at NWU ▾ Teaching and Learning ▾ Research and Innovation Library News & Media ▾

English Afrikaans Setswana

Current Students ▾ Contact us

VIRTUAL TOUR
EXPERIENCE THE NWU NOW!

NWU Virtual Tour

Current Students ▾

Contact us

- Account enquiries
- Career Centre
- Class timetables
- eFundi
- Exam results
- Exam and assessment timetables
- Graduation ceremonies
- Health Centres
- Important dates
- Personal Exam timetable
- Participation Marks
- Registration
- Student Academic Lifecycle Administration
- Maintenance Request
- Sport
- Student Counselling and Development
- Yearbooks

<http://www.nwu.ac.za/>



Where can you find information regarding your programme and modules?

- A complete outline of your programme and the modules it contains is available in the undergraduate yearbook of the Faculty of Health Sciences.

<http://studies.nwu.ac.za/studies/yearbooks>



Faculty of Health Sciences

Undergraduate

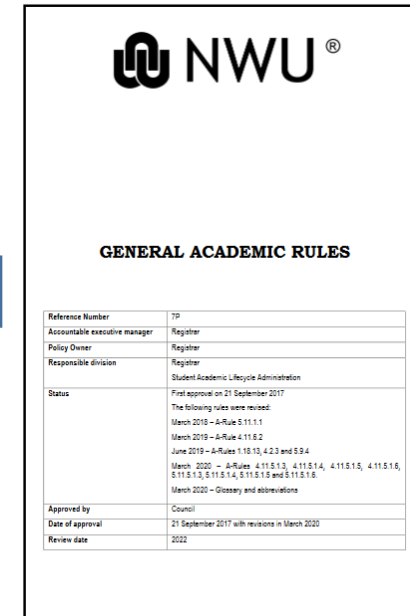
Fakulteit Gesondheidswetenkappe

Voorgraads

2023
Yearbook



Navigating the Yearbook to find information



<http://studies.nwu.ac.za/studies/yearbooks>

Important to read on Page 1

General Academic rules (A-rules)

Page
1

HSC.1 **FACULTY RULES**
HSC.1.1 **AUTHORITY OF THE GENERAL RULES**

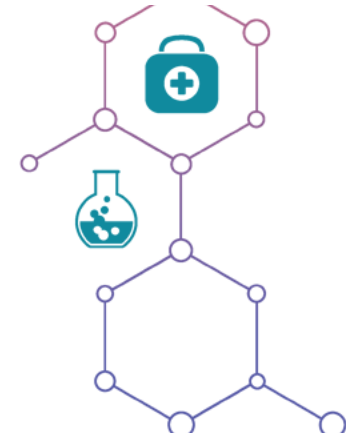
The faculty rules valid for the different qualifications, programmes and curricula of this faculty and contained in this faculty calendar are subject to the General Rules of the University, as determined from time to time by the Council of the University on recommendation by the Senate. The faculty rules should therefore be read in conjunction with the General Rules.

http://www.nwu.ac.za/sites/www.nwu.ac.za/files/files/i-governance-management/policy/Policies%20-%202020%20Update/A-Rules/7P_A-Rules_2020_P.pdf

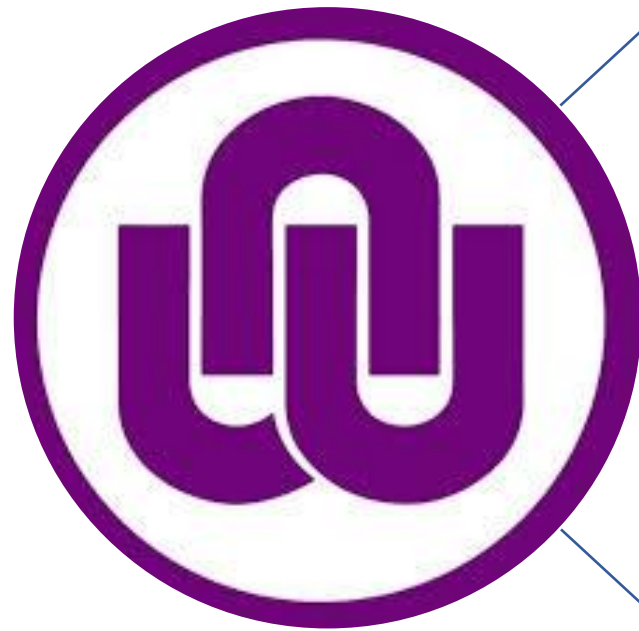
Page
4

MINIMUM REQUIREMENTS

QUALIFICATION	PROGRAM	REQUIREMENTS	APS	CAMPUS
Bachelor of Arts WITH	Psychology and Tourism Management 1GB H11, G301P Duration: 3 years	At least a level 4 (50-59%) mark for the first (home) language Mathematical Literacy level 5 (60-69%) Academic paper selection	26	Potchefstroom Full-time Contact



Psychology modules



1st year

- PSYC111 Introduction to Psychology
- PSYC121 Social & community Psychology

2nd year

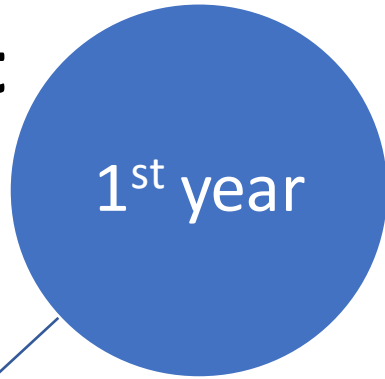
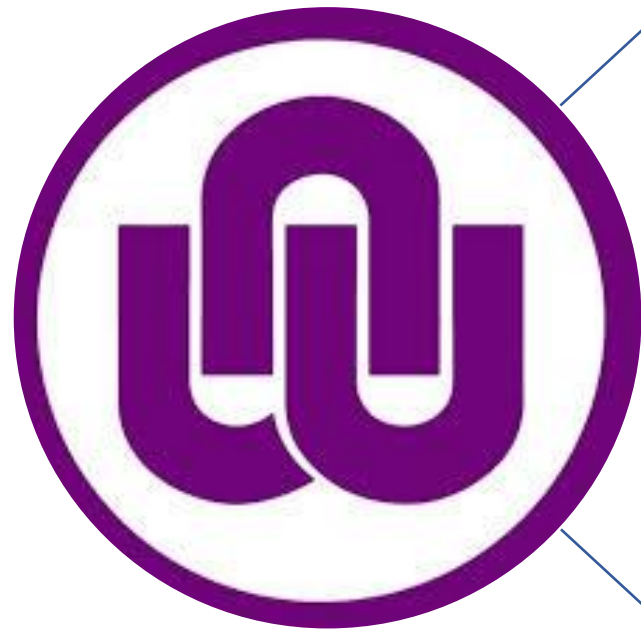
- PSYC211 Developmental Psychology
- PSYC212 Personality Psychology
- PSYC221 Positive Psychology

3rd year

- PSYC311 Psychopathology
- PSYC312 Research & Psychometry
- PSYC321 Basic counselling & ethical conduct
- PSYC323 Community & Indigenous Psychology



Tourism management modules



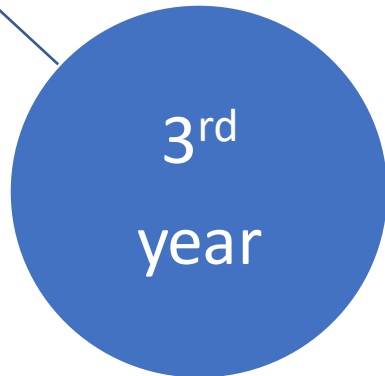
1st year

- TMBP111 Introduction to Tourism Management
- TMBP122 Lodging Management



2nd year

- TMBP211 Applied Tourism Management
- TMBP221 Tourism Marketing



3rd year

- TMBP312 Introduction to Event Management
- TMBP313 Nature Tourism
- TMBP321 Game Farm Management
- TMBP322 Applied Event Management



Psychology and Tourism Management



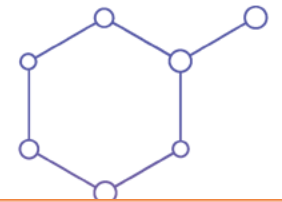
Semester 1

YEAR LEVEL 1		YEAR LEVEL 2		YEAR LEVEL 3	
PSYC 111	12	PSYC 211	16	PSYC 311	16
TMBP 111	12	PSYC 212	16	PSYC 312	16
BMAN 111	12	TMBP 211	16	TMBP 312	16
KCOM 112	12	BMAR 213	16	TMBP 313	16
<i>ATSN 111 / FREB 111 / GERB 111</i>	12			WVLS 317	12
ALDA/E 111	-				
TOTAL CREDITS SEM 1	60	TOTAL CREDITS SEM 1	64	TOTAL CREDITS SEM 1	76

Semester 2

PSYC 121	12	PSYC 221	16	PSYC 321	16
TMBP 122	12	TMBP 221	16	PSYC 323	16
BMAN 121	12	BMAN 221	16	TMBP 321	16
<i>ATSN 121 / FREB 121 / GERB 121</i>	12	WVGW 222	12	TMBP 322	16
ALDA/E 122	12				
TOTAL CREDITS SEM 2	60	TOTAL CREDITS SEM 2	60	TOTAL CREDITS SEM 2	64
TOTAL CREDITS YR 1	120	TOTAL CREDITS YR 2	124	TOTAL CREDITS YR 3	140

Making sense of all information here



MODULES:

The modules/subjects you need register for in your first year. Each module has a module code that is linked to certain module outcomes.

Every module is indicated with a code for easy referencing

Psychology modules start with PSYC.

The first number of the code indicates the year level (1 = 1st year) and the second number indicated the semester (2 = 2nd semester).

The complete list of modules that you need to complete to graduate is in your Programme (see next slide)

Module outcomes

In order to pass a module, you need to master the outcomes. You can find all the module outcomes at the end of the yearbook.

Pages 183-190

YEAR LEVEL 1		
First semester		
Module code	Type	Cr
ALDA/E111#	A	-
BMAN111	X	12
KCOM112	X	12
PSYC111	H	12
TMBP111	H	12
Select ONE	X	12
ATSN111		
FREB111		
GERB111		
Total		60
1 st semester		
YEAR LEVEL 1		
Second semester		
Module code	Type	Cr
ALDA/E122#	X	12
BMAN121	X	12
PSYC121	H	12
TMBP122	H	12
Select ONE	X	12
ATSN121		
FREB121		
GERB121		
Total		60
2 nd semester		
Total Year		120
Level 1		

Credits (Cr): Weight of each module. To successfully obtain your degree you need to obtain 384 credits at the end of your three years. This is done by passing modules.

It also indicates the average amount of study hours required to master the content. 1 credit = 10 hours thus 12 credits equals 120 study hours.

Module type: Code H, X or A

H - indicates all your majors

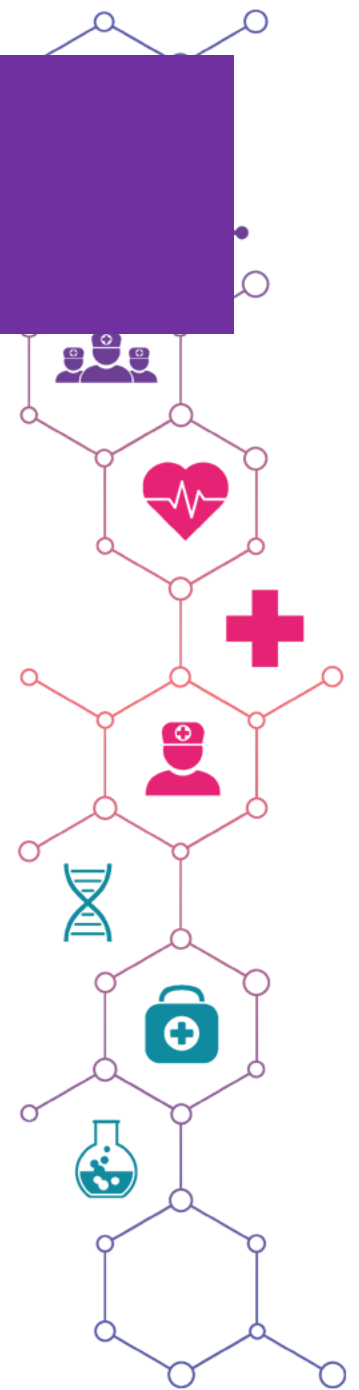
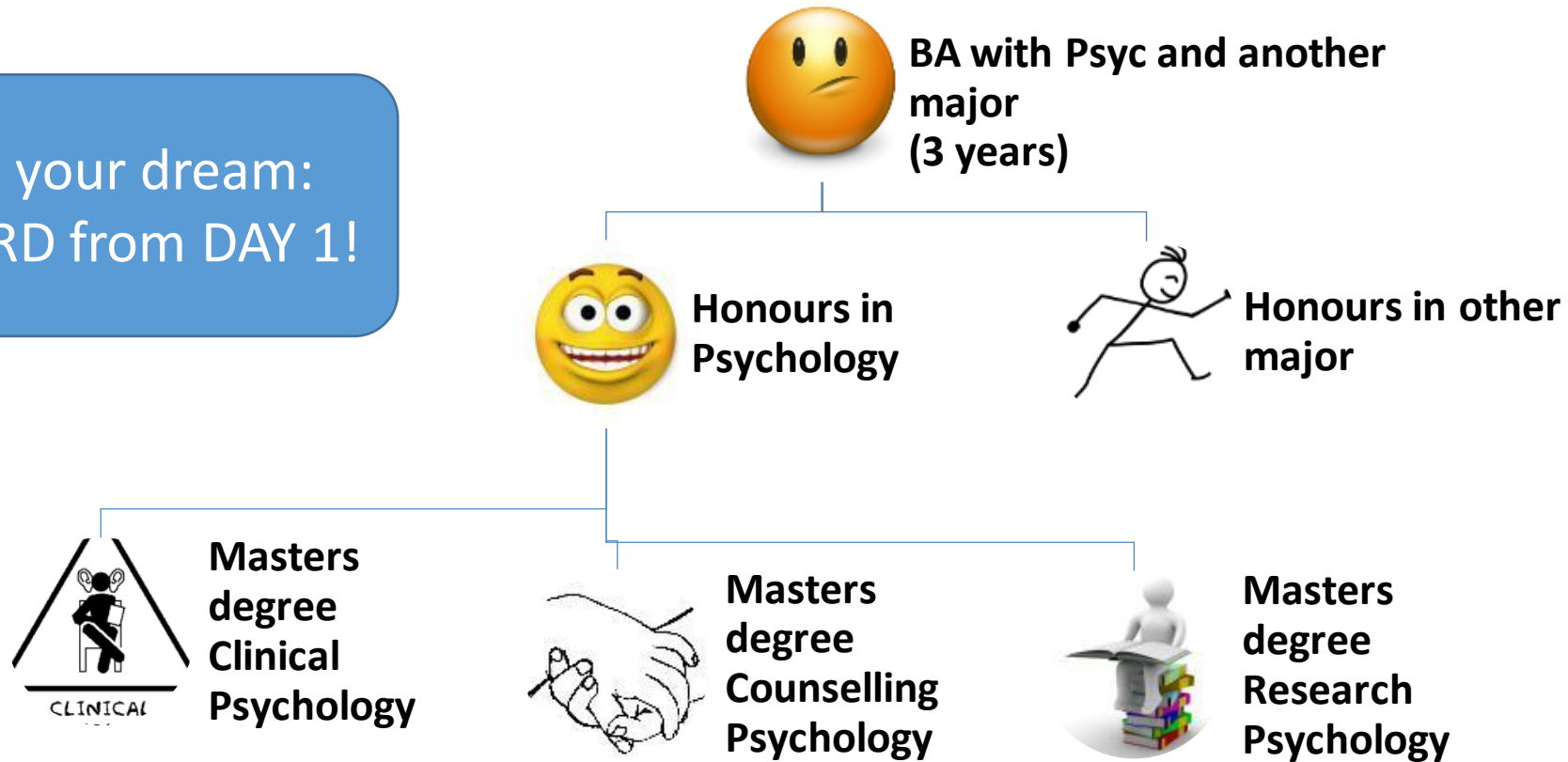
X - modules essential for your degree but not a major

A - code given for additional modules

You have to make a choice here – either ATSN/FREB/GERB. See the yearbook for more information.

How do I become a Psychologist?

If this is your dream:
Work HARD from DAY 1!



eFundi

Once you are registered, you will have access to eFundi.

All your academic information will be communicated via eFundi and details about each module can be found in the Study guide.

NWU home page:

Current Students ▾

Contact us

Account enquiries

Career Centre

Class timetables

eFundi

Exam results

Exam and assessment timetables

Graduation ceremonies

Health Centres

Important dates

Personal Exam timetable

Participation Marks

Registration

Student Academic Lifecycle Administration

Maintenance Request

Sport

Student Counselling and Development

Yearbooks



<https://efundi.nwu.ac.za/portal/>

Be ready to adapt and to succeed!

- Important to note: Workload will be much more than in school
- Whether you cope, adapt and succeed **depends on yourself**
- Take responsibility for your work - plan, organize, schedule class and work times each day
- Make sure you understand the work, **contact the lecturer when uncertain of what's expected**
- Make friends with other students who share your goals
- Use every opportunity to learn and develop



Thank you!

Look out for information sessions in February

All of the best with your studies!

