

Welcome to Psychology

2024

BECOME **GREATER** TODAY **THAN** ...

[#MyNWU](#) | [#GreaterThan](#)

Welcome to PSYCHOLOGY

**Academic structure – what/who fits in
where?**

**Background & introduction to
studies in Psychology**



Mianda Erasmus
Psychology Programme Leader
Mianda.Erasmus@nwu.ac.za



Ready for the journey?

Faculty of Health Sciences - Management

- **Executive Dean**

- Prof Awie Kotzé



- **Deputy Dean: Community Engagement and Stakeholder Relations**

- Prof Ushotanefe Useh



- **Deputy Dean: Research and Innovation**

- Prof Jeanetta du Plessis



- **Deputy Dean: Teaching and Learning**

- Prof Alida Herbst



Faculty of Health Sciences

Fields of Study



Human Movement Sciences



Psychosocial Health



Nursing



Pharmacy



Physiology



Consumer Sciences



Occupational Hygiene



Dietetics

School of Psychosocial Health: Management

School Director

Prof Elmari Deacon (acting)



Two subject groups in the School:
Psychology and Social Work

Deputy Director: MC

Mr Evans Mohlatlole (acting)



Programmes are presented across **three campuses** of the NWU: Potchefstroom, Vanderbijlpark and Mahikeng

Deputy Director: VC

Dr Christiaan Bekker



Deputy Director: PC

Prof Karel Botha (acting)

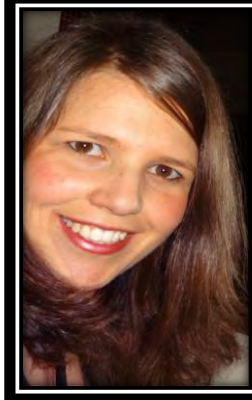


Subject group Psychology - MC

Programme leader

Ms Mianda Erasmus

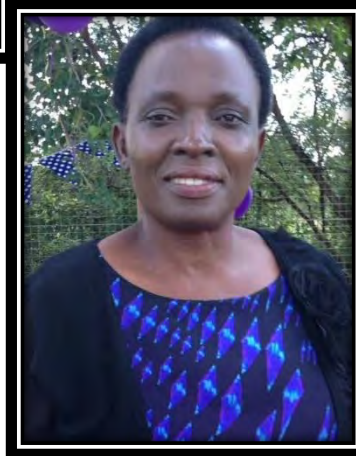
A17 – 144



Subject Group Deputy Leader

Prof Choja Oduaran

A17 – 131



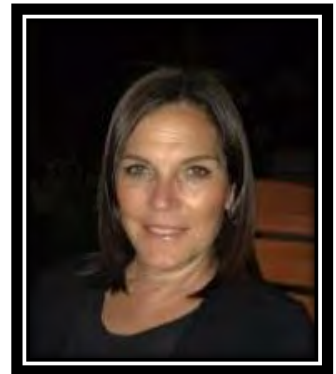
Senior Administrative Assistant

Ms Naane Mogotsi

A17 – 133



Prof Caroll Hermann
(Acting currently)



Building A17



Subject group Psychology - PC

Subject Group Leader

Prof Karel Botha

E8 – 122



Building **E8** /
J Chris Coetzee (JCC)

Senior Administrative Assistant

????

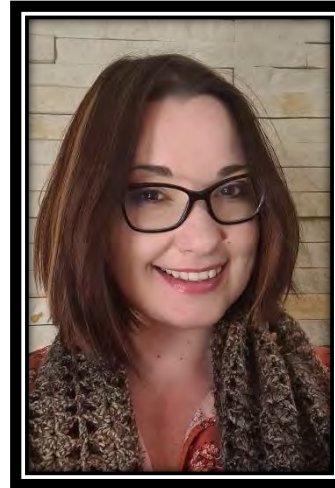


Subject group Psychology - VC

Subject Group Deputy Leader

Dr Shanaé Theunissen

A13-121



Building A13 First Floor

Senior Administrative Assistant

Ms Kgomotso Kibi

A13-108



Line of communication

Student



Lecturer



Academic Student Society and/or Student Representative Council



Subject Group Leader / Programme Leader



Deputy School Director → School Director



Deputy Dean (T&L) → Executive Dean



Deputy Vice Chancellor

What is psychology?

Definition

Psychology is

- the **science** that studies **human behaviour** and the **physiological** and **cognitive processes** that underlie it
- It is also the **profession** that applies the accumulated knowledge of this science to practical problems (Weiten, p. 19)



What are the major
research areas in
Psychology?

Major research areas in psychology

Positive
psychology

Area	Focus of research
Developmental psychology	Looks at human development across the life span. Developmental psychology once focused primarily on child development, but today devotes a great deal of research to adolescence, adulthood, and old age.
Social psychology	Focuses on interpersonal behaviour and the role of social forces in governing behaviour. Typical topics include attitude formation, attitude change, prejudice, conformity, attraction, aggression, intimate relationships, and behaviour in groups.
Educational psychology	Studies how people learn and the best ways to teach them. Examines curriculum design, teacher training, achievement testing, student motivation, classroom diversity, and other aspects of the educational process.
Health psychology	Focuses on how psychological factors relate to the promotion and maintenance of physical health and the causation, prevention, and treatment of illness.
Physiological psychology	Examines the influence of genetic factors on behaviour and the role of the brain, nervous system, endocrine system, and bodily chemicals in the regulation of behaviour.
Experimental psychology	Encompasses the traditional core of topics that psychology focused on heavily in its first half-century as a science: sensation, perception, learning, conditioning, motivation, and emotion. The name experimental psychology is somewhat misleading, as this is not the only area in which experiments are done. Psychologists working in all the areas listed here conduct experiments.
Cognitive psychology	Focuses on "higher" mental processes, such as memory, reasoning, information processing, language, problem solving, decision making, and creativity.
Psychometrics	Is concerned with the measurement of behaviour and capacities, usually through the development of psychological tests. Psychometrics is involved with the design of tests to assess personality, intelligence, and a wide range of abilities. It is also concerned with the development of new techniques for statistical analysis.
Personality	Is interested in describing and understanding individuals' consistency in behaviour, which represents their personality. This area of interest is also concerned with the factors that shape personality and with personality assessment.



What are the major
speciality areas in
Psychology?

Speciality areas in psychology

Weiten, p. 18; Fig 1.8

Specialty	Focus of professional practice
Clinical psychology	Clinical psychologists are concerned with the evaluation, diagnosis, and treatment of individuals with psychological disorders, as well as treatment of less severe behavioural and emotional problems. Principal activities include interviewing clients, psychological testing, and providing group or individual psychotherapy.
Counselling psychology	Counselling psychology overlaps with clinical psychology in that specialists in both areas engage in similar activities—interviewing, testing, and providing therapy. However, counselling psychologists usually work with a somewhat different clientele, providing assistance to people struggling with everyday problems of moderate severity. Thus, they often specialise in family, marital, or career counselling.
Industrial and organisational psychology	Psychologists in this area perform a wide variety of tasks in the world of business and industry. These tasks include running human resources departments, working to improve staff morale and attitudes, striving to increase job satisfaction and productivity, examining organisational structures and procedures, and making recommendations for improvements.
School psychology Educational psychology	School psychologists strive to promote the cognitive, emotional, and social development of children in schools. They usually work in elementary or secondary schools, where they test and counsel children having difficulties in school and aid parents and teachers in solving school-related problems.
Clinical neuropsychology	Clinical neuropsychologists are involved in the assessment and treatment of people who suffer from central nervous system dysfunctions due to head trauma, dementia, stroke, seizure disorders, and so forth.
Forensic psychology	Forensic psychologists apply psychological principles to issues arising in the legal system, such as child custody decisions, hearings on competency to stand trial, violence risk assessments, involuntary commitment proceedings, and so forth.
Research psychology	Research psychologists apply skills in statistics, research design, computing and data analysis in an attempt to answer a variety of questions. They may work in government departments, management institutes, market research, media or public opinion research.



6 Areas of Specialisation: PSYCHOLOGY

Clinical



Industrial



Counselling



Neuro



Educational



Research



How do I become a Psychologist?

What is the training route to
become a psychologist?

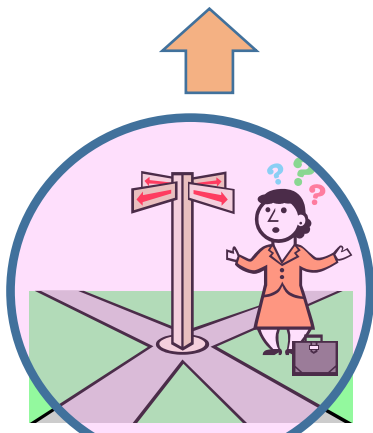
How many years
should you study?



Training route: Psychologist

4 year B.PSYC programme
(not offered at NWU)

Selection:
Gate 1



Selection
Gate 2

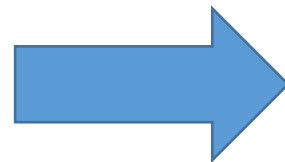
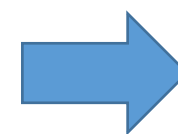


Masters
Clinical Psychology
Counselling Psychology
Research Psychology

Honours in
Psychology
(academic)

Selection:
Gate 1
At least 65%
average

PSYC 1 - 3



You are
here



After university



**Masters degree
Clinical Psychology**



Internship: Hospital



Community service



**Masters degree
Counselling
Psychology**



**Internship at an
accredited
counselling site**



**Masters degree
Research
Psychology**



**Internship at a
university of research
company**

Career possibilities

Clinical Psychologist

- Assessment, diagnosing and intervention with patients with especially serious psychological distress.
- Works mostly in hospitals
- Private practice

Counselling Psychologist

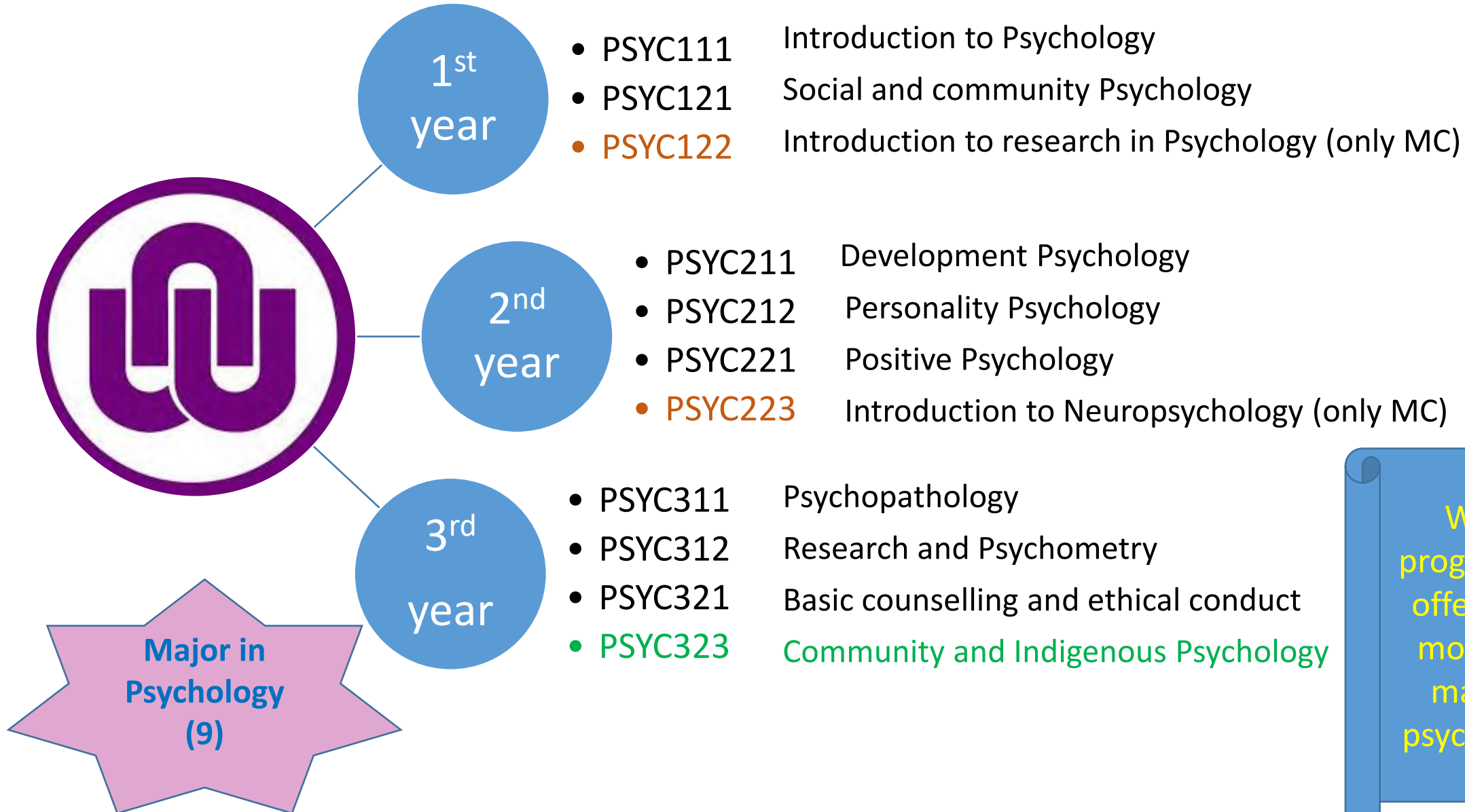
- Assessment, diagnoses and intervention with clients experiencing life challenges and less serious psychological distress
 - Works especially with problems related to individuals, families, couples, work planning and career related counselling.
 - Private practice

Research Psychologist

- Planning, development and implementation of research in the field of psychology

Let's start at the
very beginning...

Psychology modules



Which programmes offer these modules / major in psychology?

PC

Page 66

Psychology and
Geography and
Environmental
Management
1GB H10

There is a separate document
to explain the details of this
programme.

YEAR LEVEL 1			YEAR LEVEL 2			YEAR LEVEL 3		
First semester			First semester			First semester		
Module code	Type	Cr	Module code	Type	Cr	Module code	Type	Cr
ALDA/E111#	A	-	GEOG211	H	16	GEOG311	H	32
GEOG111	H	12	Select ONE: LARM212 SOCY211	X	16	PSYC311	H	16
LARM112	X	12	PSYC211	H	16	PSYC312	H	16
PSYC111	H	12	PSYC212	H	16	WVLS317	X	12
SOCY111	X	12						
TMBP111	X	12						
Total 1st semester		60	Total 1st semester		64	Total 1st semester		76
YEAR LEVEL 1			YEAR LEVEL 2			YEAR LEVEL 3		
Second semester			Second semester			Second semester		
Module code	Type	Cr	Module code	Type	Cr	Module code	Type	Cr
ALDA/E122#	X	12	GEOG221	H	16	GEOG321	H	32
GEOG121	H	12	Select ONE: LARM221 SOCY221	X	16	PSYC321	H	16
Select ONE: IOPS121 SOCY121	X	12	PSYC221	H	16	PSYC323	H	16
PSYC121	H	12	WVGW222	X	12			
TMBP122	X	12						
Total 2nd semester		60	Total 2nd semester		60	Total 2nd semester		64
Total Year Level 1		120	Total Year Level 2		124	Total Year Level 3		140
Credit total of the Curriculum								384

Faculty rule HSC.1.19 refers to ALDA/E111, ALDA112 and ALDA/E122.

Students who want to continue with second year Labour Relations Management must register for IOPS121.

Students who want to continue with second year Sociology must register for SOCY121.

Psychology and Tourism Management 1GB H11

There is a separate document to explain the details of this programme.

YEAR LEVEL 1			YEAR LEVEL 2			YEAR LEVEL 3		
First semester			First semester			First semester		
Module code	Type	Cr	Module code	Type	Cr	Module code	Type	Cr
ALDA/E111#	A	-	BMAR213	X	16	PSYC311	H	16
BMAN111	X	12	PSYC211	H	16	PSYC312	H	16
KCOM112	X	12	PSYC212	H	16	TMBP312	H	16
PSYC111	H	12	TMBP211	H	16	TMBP313	H	16
TMBP111	H	12				WVLS317	X	12
Select ONE ATSN111 FREB111 GERB111	X	12						
Total 1st semester		60	Total 1st semester		64	Total 1st semester		76
YEAR LEVEL 1			YEAR LEVEL 2			YEAR LEVEL 3		
Second semester			Second semester			Second semester		
Module code	Type	Cr	Module code	Type	Cr	Module code	Type	Cr
ALDA/E122#	X	12	BMAN221	X	16	PSYC321	H	16
BMAN121	X	12	PSYC221	H	16	PSYC323	H	16
PSYC121	H	12	TMBP221	H	16	TMBP321	H	16
TMBP122	H	12	WVGW222	X	12	TMBP322	H	16
Select ONE ATSN121 FREB121 GERB121	X	12						
Total 2nd semester		60	Total 2nd semester		60	Total 2nd semester		64
Total Year Level 1		120	Total Year Level 2		124	Total Year Level 3		140
Credit total of the Curriculum								384

Faculty rule HSC.1.19 refers to ALDA/E111, ALDA112 and ALDA/E122.

Psychology
and Labour
Relations
Management
1GR H02

There is a separate document
to explain the details of this
programme.

HSC.9.7.8 Compilation of programme: Psychology and Labour Relations Management 1GR H02; G301P/V

YEAR LEVEL 1			YEAR LEVEL 2			YEAR LEVEL 3		
First semester			First semester			First semester		
Module code	Type	Cr	Module code	Type	Cr	Module code	Type	Cr
ALDA/E111#	A	-	IOPS211	X	16	IOPS311	X	16
BMAN111	X	12	LARM212	H	16	LARM311	H	16
KCOM112	X	12	PSYC211	H	16	PSYC311	H	16
LARM112	H	12	PSYC212	H	16	PSYC312	H	16
PSYC111	H	12				WVLS317	X	12
STTN111	X	12						
Total 1st semester		60	Total 1st semester		64	Total 1st semester		76
YEAR LEVEL 1			YEAR LEVEL 2			YEAR LEVEL 3		
Second semester			Second semester			Second semester		
Module code	Type	Cr	Module code	Type	Cr	Module code	Type	Cr
ALDA/E122#	X	12	LARM221	H	16	LARM321	H	16
BMAN121	X	12	LLAW221	X	12	LARM322	H	16
IOPS121	H	12	PSYC221	H	16	PSYC321	H	16
COMS124	X	12	STTN124	X	12	PSYC323	H	16
PSYC121	H	12	WVGW222	X	12			
Total 2nd semester		60	Total 2nd semester		68	Total 2nd semester		64
Total Year Level 1		120	Total Year Level 2		132	Total Year Level 3		140
Credit total of the Curriculum								392

Faculty rule HSC.1.19 refers to ALDA/E111, ALDA112 and ALDA/E122.

MC

Page 73

Bachelor of
Social Sciences
WITH
Psychology
1GG-H38, G301M

There is a separate document
to explain the details of this
programme.

YEAR LEVEL 1			YEAR LEVEL 2			YEAR LEVEL 3		
First semester			First semester			First semester		
Module code	Type	Cr	Module code	Type	Cr	Module code	Type	Cr
PSYC111	H	12	PSYC211	H	16	PSYC311	H	16
			PSYC212	H	16	PSYC312	H	16
Choose ONE: DEVS111 or HPOP111 or SOCY111	H H H	12 12 12	Continue the elective from Year 1: DEVS211 or HPOP212 or SOCY211	H H H	16 16 16	Continue the elective from Year 2: DEVS311 or HPOP311 and HPOP312 SOCY314 and SOCY317	H H H H	32 16&16 16&16
Choose ONE: DEVS111 or ENLL111 or FREN111 or HIST112 or POLI112 or SETM111	X X X X X	12 12 12 12 12	Continue the elective from Year 1: DEVS211 or ENLL211 or FREN211 or HIST213 or POLI213 or SETM211	X X X X X	16 16 16 16 16	WVLS317	X	12
ALDE111	X	12						
HCOM117	X	12						
Total 1st sem.		60	Total 1st semester		64	Total 1st semester		76
YEAR LEVEL 1			YEAR LEVEL 2			YEAR LEVEL 3		
Second semester			Second semester			Second semester		
Module code	Type	Cr	Module code	Type	Cr	Module code	Type	Cr
PSYC121	H	12	PSYC221	H	16	PSYC321	H	16
PSYC122	H	12	PSYC223	H	12	PSYC323	H	16
Continue the elective from Year 1, Semester 1: DEVS121 or HPOP121 OR SOCY121	H H H	12 12 12	Continue the elective from Year 2, Semester 1: DEVS221 or HPOP221 or SOCY221	H H H	16 16 16	Continue the elective from Year 3, Semester 1: DEVS321 or HPOP321 & HPOP322 SOCY323 & SOCY326	H H H H	32 16&16 16&16
Continue the elective from Year 1, Semester 1: DEVS121 or ENLL121 or FREN121 or HIST123 or POLI123 or SETM121	X X X X X	12 12 12 12 12	Continue the elective from Year 2, Semester 1: DEVS221 or ENLL221 or FREN221 or HIST223 or POLI223 or SETM221	X X X X X	16 16 16 16 16			
ALDE122	X	12	WVGW222	X	12			
Total 2nd sem.		60	Total 2nd sem.		72	Total 2nd sem.		64
Total Year Level 1		120	Total Year Level 2		136	Total Year Level 3		140
Credit total of the Curriculum								396

Other programmes offering psychology as major

Faculty of Health Sciences

- Human movement science and Psychology
- Recreation science and Psychology
- Psychology and Labour relations management
- Psychology and Geography and Environmental Management
- Psychology and Tourism management
- Physiology and Psychology

Faculty of Humanities

- *Psychology and languages*
- *Sociology and Psychology*
- *Ethics, Philosophy and Psychological Sciences*
- *Psychology and Society*
- *Psychology and the Social Sciences*
- *History and Psychology*
- *Social Anthropology and Psychology*
- *etc.*



Other important matters

TIME ALLOCATION

- 12 credits = 120 study hours
- 120 hours divided by 15 weeks = 8 hours per week
- Any time spent on psychology module/content
- That means: **8 hours PER WEEK** of work on PSYC111 & 121.

(and every other 12 credit module!)

12 credits
=
120 study hours



**WHAT TO
EXPECT**

Policy on Academic Integrity

Policy on academic integrity

"Academic integrity"

The adherence to ethics of honest scholarship and the ability to work independently; also to give credit to the ideas of others and the re-use of one's own previous work, and the submission of original research products for assessment, examination and review.

"Plagiarism"

- 1 The use without appropriate acknowledgement of another's ideas, hardcopy or electronic texts, images, computer programmes, sounds, designs, performance or any form of creative work as one's own work, including activities such as appropriating the knowledge, insights, wording or formulation of anybody else's work.
- 2 Since the *intention to deceive* is a key notion in the understanding of plagiarism the findings in an investigation of plagiarism must be presented in a continuum ranging from "strong intention to deceive" (*presenting the work as original and/or as the author's own*) to "weak intention to deceive" (*careless or sloppy writing and/or improper referencing*).
- 3 Unconscionable lifting of text.

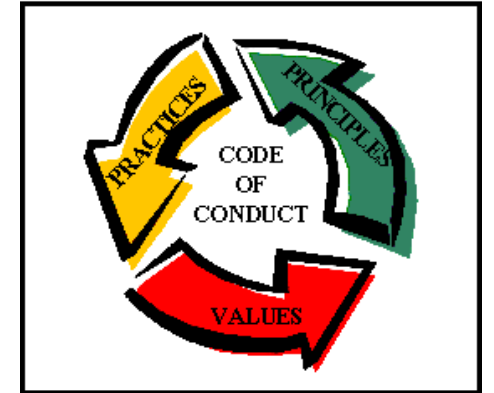
Reference number	2P/2.4.3.2
Accountable executive manager	Registrar
Policy owner	Registrar
Responsible division	Registrar
Status	Approved
Approved by	Council
Date of approval	27 September 2018
Review date	2021
Procedures in terms of this policy	None
Web address of this policy	http://www.nwu.ac.za/gov_man/policy/index.html
Address on the policy data base	(10935746) H:\HSC\2. Management\2.1.3 Policy management\Beleide\Raad September 2018\2P/2.4.3.3_Academic Integrity_e.docm

https://www.nwu.ac.za/sites/www.nwu.ac.za/files/files/i-governance-management/policy/2P-2.4.3.2_Academic%20integrity_e.pdf

- Disciplinary action can be taken
- All assignments must be submitted in soft copy on eFundi via "Turn-it-in", AI detector



Code of conduct



- Take responsibility for continuous learning
- Engage with online content
- Engage with lecturers and students where required
- Comply with submission deadlines
- Respect others
- Act in an ethically correct manner

Asking for assistance is IMPORTANT

- Ask your lecturer!
 - Consult with the responsible lecturer
 - Currently – send emails (ask for online or face-to-face consultation)
 - Maintain an open, trusting relationship
- Use the support available
 - CTL training videos on eFundi, etc.
 - Library
- Supplemental instructors (SIs)
 - Senior students





FACULTY OF
HEALTH SCIENCES

All of the best with your studies at NWU!

In this School we have your well-being at heart

