

# Psychology Vanderbijlpark/Potchefstroom Campus: 2023

## School of Psychosocial Health

BECOME **GREATER** TODAY **THAN** ...

[#MyNWU](#) | [#GreaterThan](#)



FACULTY OF  
HEALTH SCIENCES

# Welcome to PSYCHOLOGY

This document is a brief introduction to the  
First Year students of 2023 accepted for:

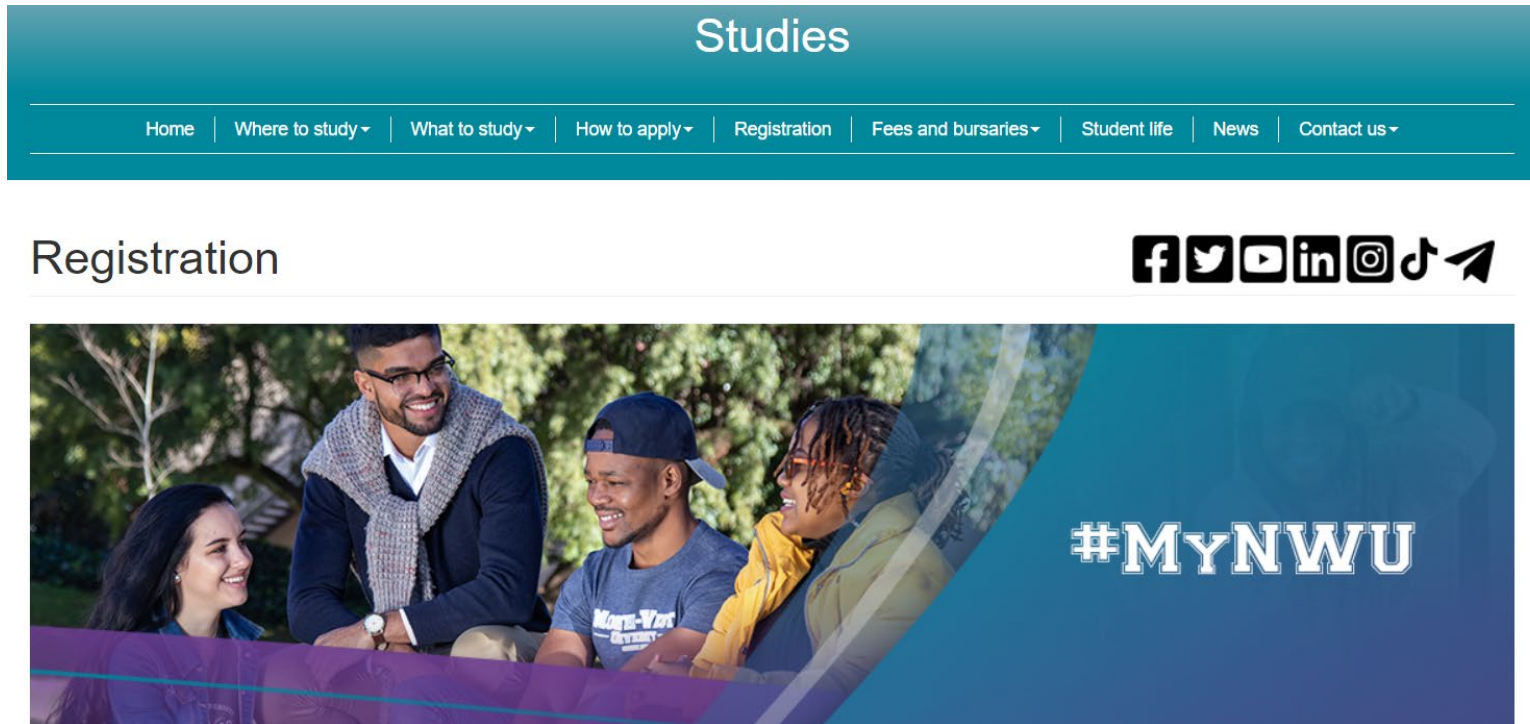
**Bachelor of Arts in Behavioural  
Sciences with Psychology and  
Labour Relations Management**  
1GR H02, G301P/V

Shanaé Theunissen  
Subject Group Deputy Leader  
[Shanae.theunissen@nwu.ac.za](mailto:Shanae.theunissen@nwu.ac.za)

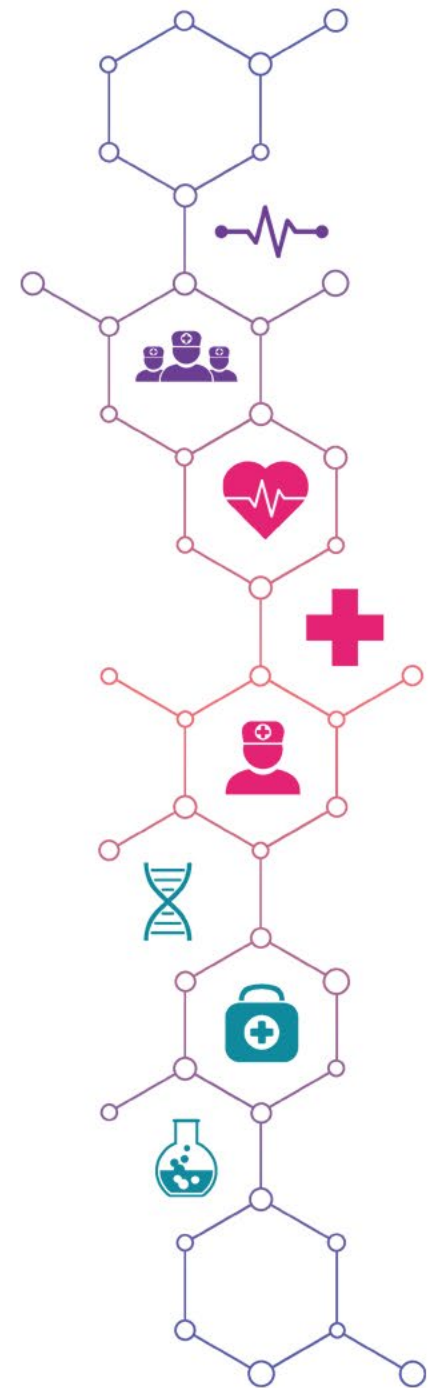


# Online Registration

- Your programme is structured. This means that there are no choices for you to make and all modules as listed are compulsory for you to obtain your degree.
- You will register for BOTH semesters of the 1<sup>st</sup> year.



The screenshot shows the 'Studies' section of the NWU website. At the top, the word 'Studies' is centered in white on a teal background. Below it is a navigation menu with links: Home, Where to study, What to study, How to apply, Registration, Fees and bursaries, Student life, News, and Contact us. The 'Registration' link is highlighted. Below the navigation is a row of social media icons for Facebook, Twitter, YouTube, LinkedIn, Instagram, TikTok, and a share icon. The main content area features a photograph of four diverse students smiling and talking outdoors. A teal overlay on the right side of the photo contains the hashtag '#MYNWU' in white, bold, uppercase letters.



# Navigating the NWU Website



About Us ▾ Study at NWU ▾ Teaching and Learning ▾ Research and Innovation Library News & Media ▾

English Afrikaans Setswana

Current Students ▾ Contact us

VIRTUAL TOUR  
EXPERIENCE THE NWU NOW!

NWU Virtual Tour

Current Students ▾

Contact us

- Account enquiries
- Career Centre
- Class timetables
- eFundi
- Exam results
- Exam and assessment timetables
- Graduation ceremonies
- Health Centres
- Important dates
- Personal Exam timetable
- Participation Marks
- Registration
- Student Academic Lifecycle Administration
- Maintenance Request
- Sport
- Student Counselling and Development
- Yearbooks

<http://www.nwu.ac.za/>



# Where can you find information regarding your programme and modules?

- A complete outline of your programme and the modules it contains is available in the undergraduate yearbook of the Faculty of Health Sciences.

<http://studies.nwu.ac.za/studies/yearbooks>



Faculty of Health Sciences  
**Undergraduate**  
Fakulteit Gesondheidswetenkappe  
**Voorgaads**

**2023**  
Yearbook



# Navigating the Yearbook to find information



Page  
**1**

HSC.1  
HSC.1.1

## FACULTY RULES

### AUTHORITY OF THE GENERAL RULES

The faculty rules valid for the different qualifications, programmes and curricula of this faculty and contained in this faculty calendar are subject to the General Rules of the University, as determined from time to time by the Council of the University on recommendation by the Senate. The faculty rules should therefore be read in conjunction with the General Rules.

[http://www.nwu.ac.za/sites/www.nwu.ac.za/files/files/i-governance-management/policy/Policies%20-%202020%20Update/A-Rules/7P\\_A-Rules\\_2020\\_P.pdf](http://www.nwu.ac.za/sites/www.nwu.ac.za/files/files/i-governance-management/policy/Policies%20-%202020%20Update/A-Rules/7P_A-Rules_2020_P.pdf)


← Important to read on Page 1

<http://studies.nwu.ac.za/studies/yearbooks>

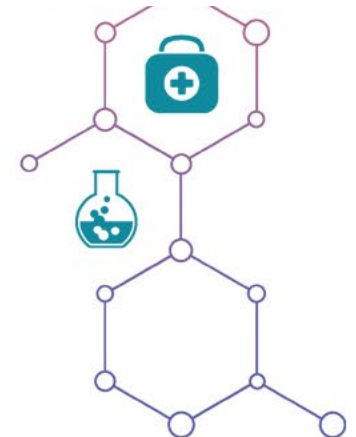
← General Academic rules (A-rules)

Page  
**4**

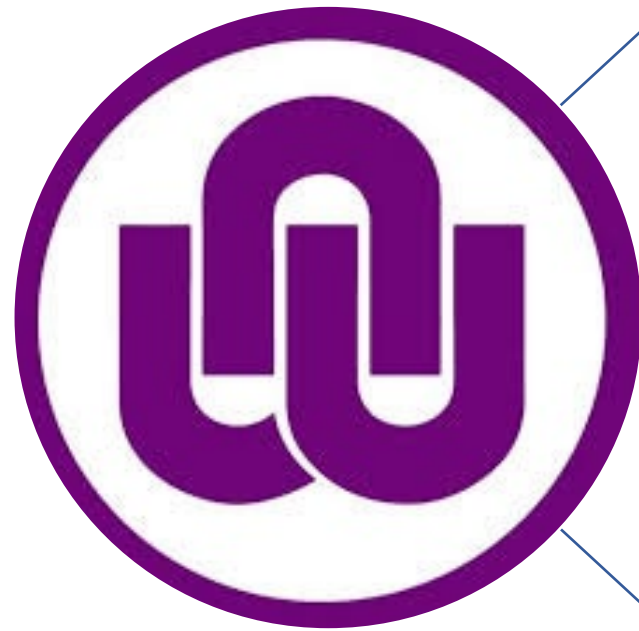
## MINIMUM REQUIREMENTS

 NWU <sup>®</sup>	
<b>GENERAL ACADEMIC RULES</b>	
Reference Number	7P
Accountable executive manager	Registrar
Policy Owner	Registrar
Responsible division	Registrar
	Student Academic Lifecycle Administration
Status	First approval on 21 September 2017 The following rules were revised: March 2018 – A-Rule 5.11.5.1 March 2019 – A-Rule 4.11.5.2 June 2019 – A-Rules 1.15.13, 4.2.3 and 5.9.4 March 2020 – A-Rules 4.11.5.1.3, 4.11.5.1.4, 4.11.5.1.5, 4.11.5.1.6, 5.11.5.1.3, 5.11.5.1.4, 5.11.5.1.5 and 5.11.5.1.6 March 2020 – Glossary and abbreviations
Approved by	Council
Date of approval	21 September 2017 with revisions in March 2020
Review date	2022

QUALIFICATION	PROGRAM	REQUIREMENTS	APS	CAMPUS
<b>Bachelor of Arts in Behavioural Sciences WITH</b>	Psychology & Labour Relations Management 1 GR H02, G301P/V Duration: 3 years	At least a level 4 (50-59%) mark for the first (home) language Mathematics level 3 (40-49%) or Mathematical Literacy level 5 (60-69%) Academic paper selection	26	Potchefstroom Vanderbijlpark  Full-time Contact



# Psychology modules



1<sup>st</sup> year

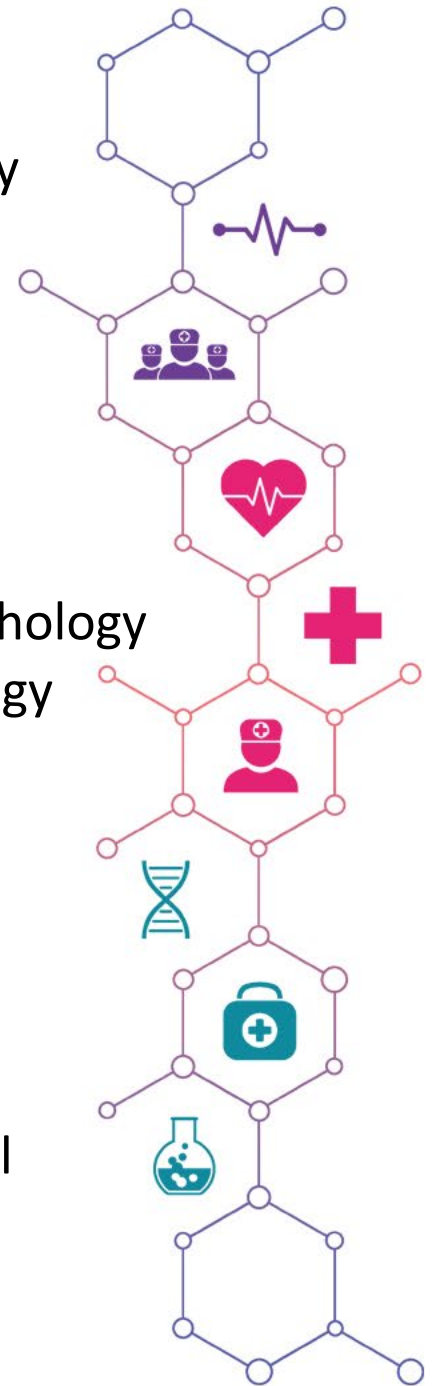
- PSYC111 Introduction to Psychology
- PSYC121 Social & community Psychology

2<sup>nd</sup> year

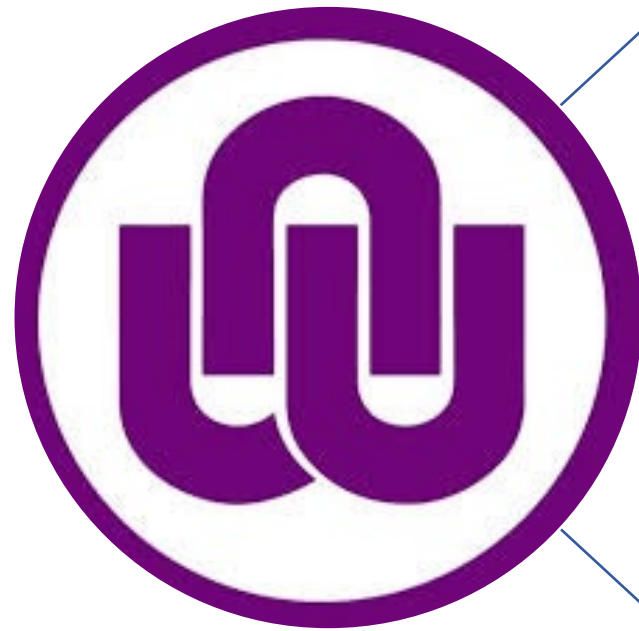
- PSYC211 Developmental Psychology
- PSYC212 Personality Psychology
- PSYC221 Positive Psychology

3<sup>rd</sup> year

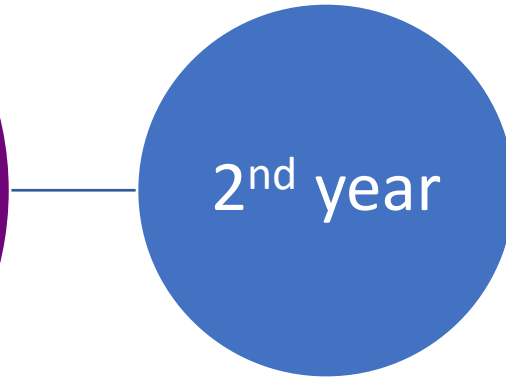
- PSYC311 Psychopathology
- PSYC312 Research & Psychometry
- PSYC321 Basic counselling & ethical conduct
- PSYC322 Applied Psychology



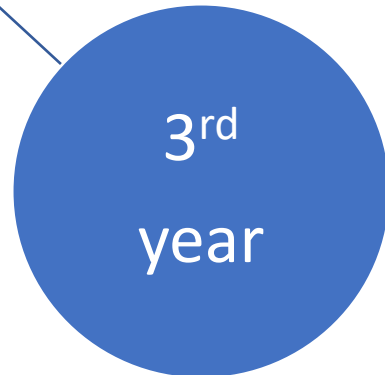
# Labour relations modules



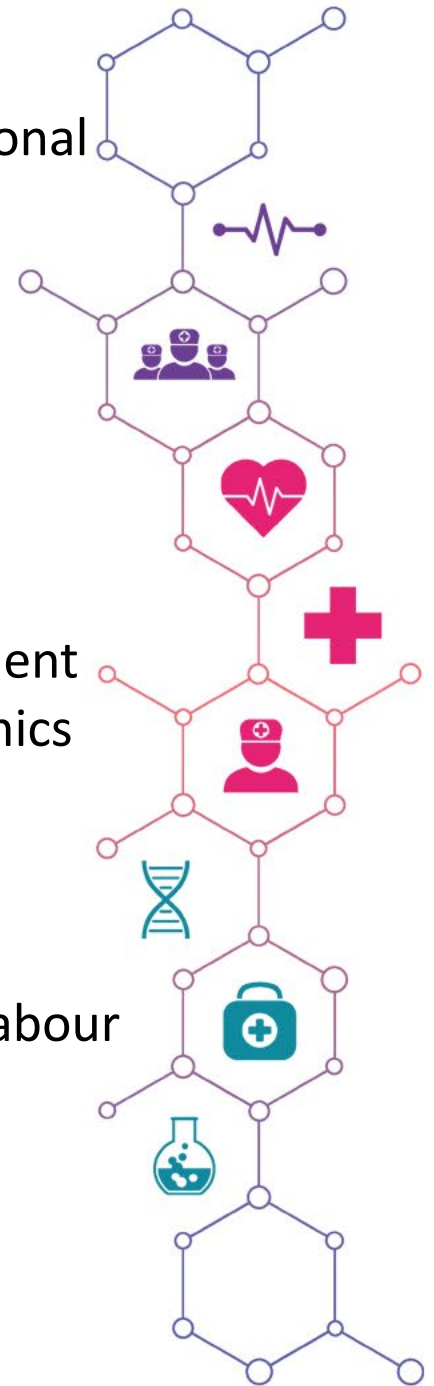
- LARM112 Introduction to International Labour Organisation
- IOPS 121 Occupational Health and Ergonomics



- LARM212 Diversity Management
- LARM221 Work Group Dynamics

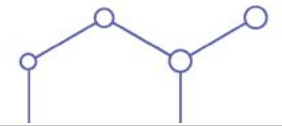


- LARM311 Theory and Practice of Labour Relations
- LARM321 Management of Labour Relations
- LARM322 Conflict Resolution





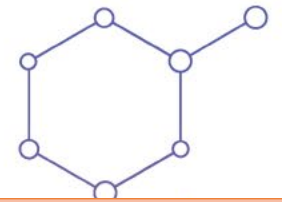
# Psychology and Labour Relations Management



	YEAR LEVEL 1		YEAR LEVEL 2		YEAR LEVEL 3	
<b>Semester 1</b>	PSYC 111	12	PSYC 211	16	PSYC 311	16
	LARM 112	12	PSYC 212	16	PSYC 312	16
	BMAN 111	12	LARM 212	16	LARM 311	16
	KCOM 112	12	IOPS 211	16	IOPS 311	16
	STTN 111	12			WVLS 317	12
	ALDA/E 111	-				
	<b>TOTAL CREDITS SEM 1</b>	<b>60</b>	<b>TOTAL CREDITS SEM 1</b>	<b>64</b>	<b>TOTAL CREDITS SEM 1</b>	<b>76</b>
<b>Semester 2</b>	PSYC 121	12	PSYC 221	16	PSYC 321	16
	IOPS 121	12	LARM 221	16	PSYC 322	16
	BMAN 121	12	LLAW 221	12	LARM 321	16
	COMS 124	12	STTN 124	12	LARM 322	16
	ALDA/E 122	12	WVGW 222	12		
	<b>TOTAL CREDITS SEM 2</b>	<b>60</b>	<b>TOTAL CREDITS SEM 2</b>	<b>68</b>	<b>TOTAL CREDITS SEM 2</b>	<b>64</b>
	<b>TOTAL CREDITS YR 1</b>	<b>120</b>	<b>TOTAL CREDITS YR 2</b>	<b>132</b>	<b>TOTAL CREDITS YR 3</b>	<b>140</b>
					<b>392</b>	



# Making sense of all information here



## MODULES:

The modules/subjects you need register for in your first year. Each module has a module code that is linked to certain module outcomes.

Every module is indicated with a code for easy referencing

Psychology modules start with PSYC.

The first number of the code indicates the year level (1 = 1st year) and the second number indicated the semester (2 = 2nd semester).

The complete list of modules that you need to complete to graduate is in your Programme (see next slide)

## Module outcomes

In order to pass a module, you need to master the outcomes. You can find all the module outcomes at the end of the yearbook.

Pages 183-190

YEAR LEVEL 1		
First semester		
Module code	Type	Cr
ALDA/E111#	A	-
BMAN111	X	12
KCOM112	X	12
LARM112	H	12
PSYC111	H	12
STTN111	X	12
<b>Total</b>		<b>60</b>
1 <sup>st</sup> semester		
YEAR LEVEL 1		
Second semester		
Module code	Type	Cr
ALDA/E122#	X	12
BMAN121	X	12
IOPS121	H	12
COMS124	X	12
PSYC121	H	12
<b>Total</b>		<b>60</b>
2 <sup>nd</sup> semester		
<b>Total Year</b>		<b>120</b>
Level 1		

**Credits (Cr):** Weight of each module. To successfully obtain your degree you need to obtain 392 credits at the end of your three years. This is done by passing modules.

It also indicates the average amount of study hours required to master the content. 1 credit = 10 hours thus 12 credits equals 120 study hours.

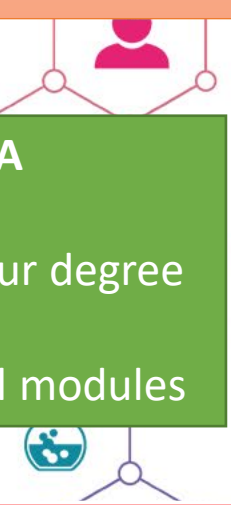
## Module type: Code H, X or A

H - indicates all your majors

X - modules essential for your degree but not a major

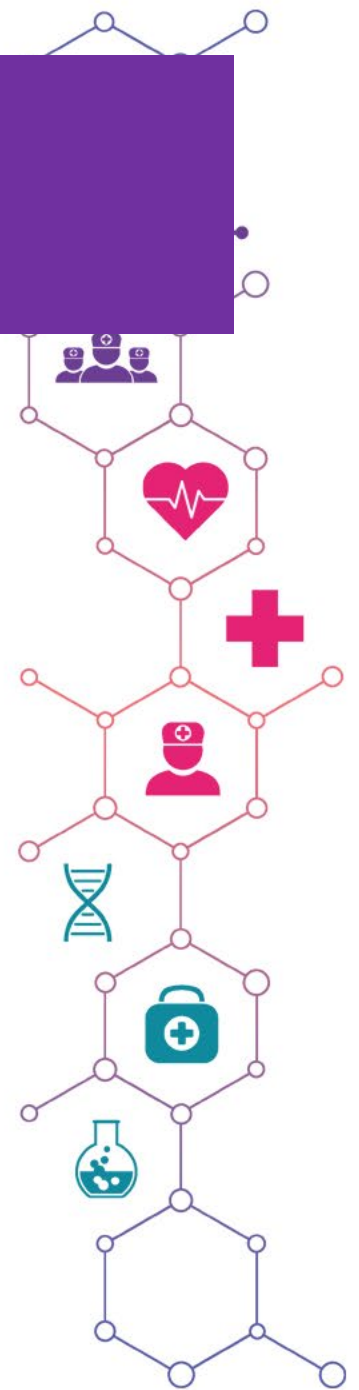
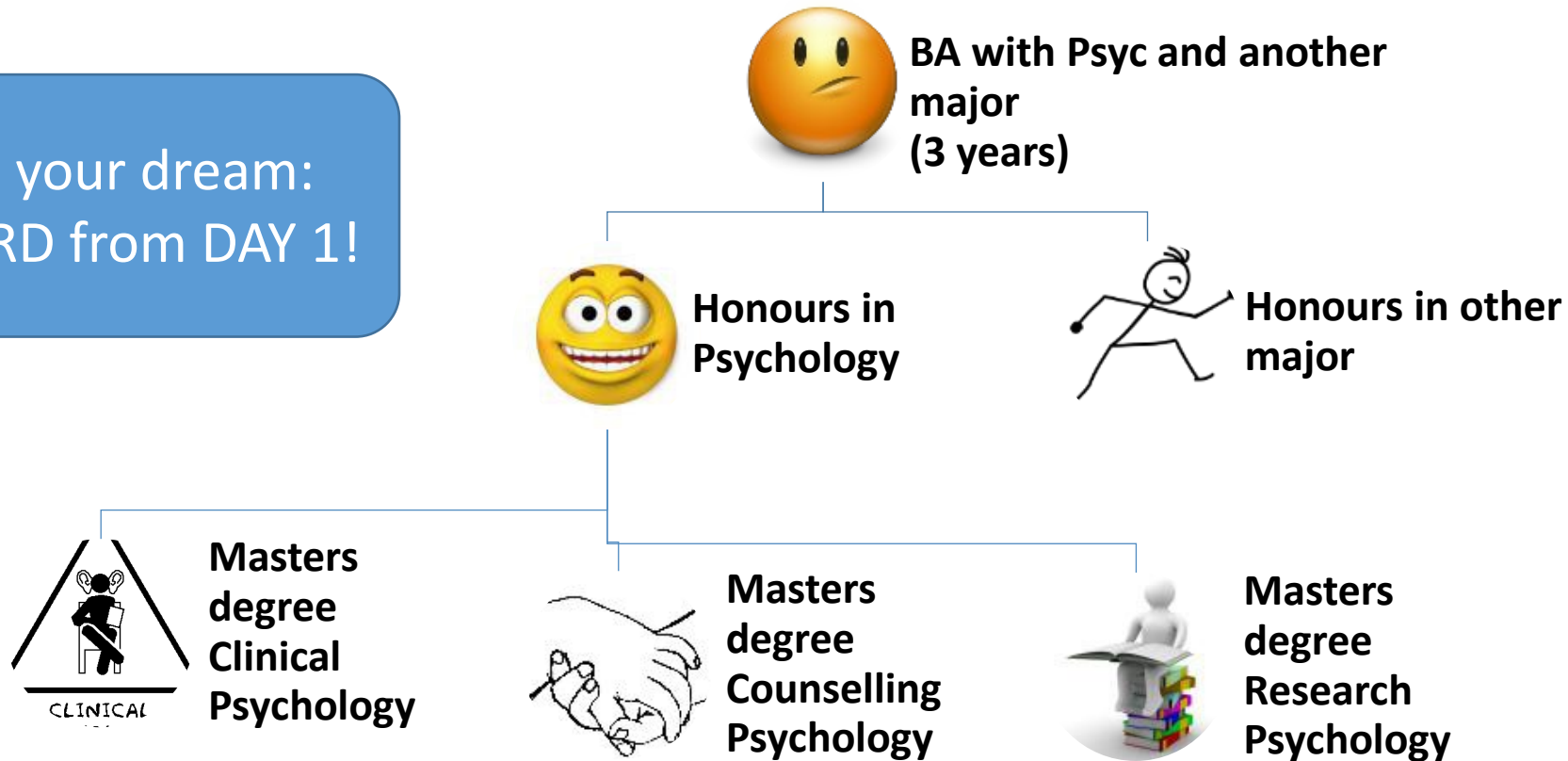
A - code given for additional modules

**There are no options in this programme – all modules are compulsory.**



# How do I become a Psychologist?

If this is your dream:  
Work HARD from DAY 1!



# eFundi

Once you are registered, you will have access to eFundi.

All your academic information will be communicated via eFundi and details about each module can be found in the Study guide.

NWU home page:

Current Students ▾

Contact us

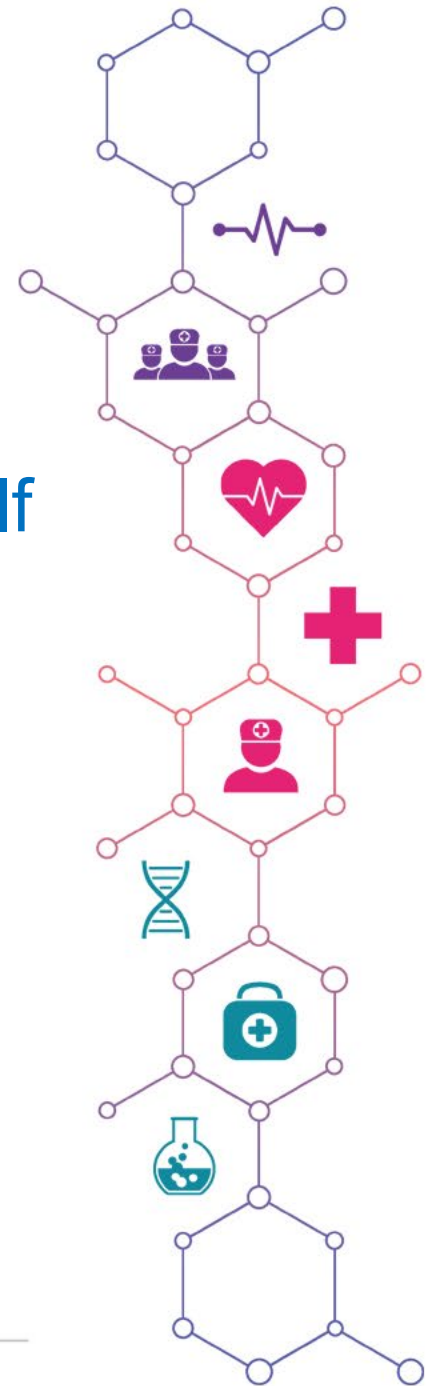
- Account enquiries
- Career Centre
- Class timetables
- eFundi
- Exam results
- Exam and assessment timetables
- Graduation ceremonies
- Health Centres
- Important dates
- Personal Exam timetable
- Participation Marks
- Registration
- Student Academic Lifecycle Administration
- Maintenance Request
- Sport
- Student Counselling and Development
- Yearbooks



<https://efundi.nwu.ac.za/portal/>

# *Be ready to adapt and to succeed!*

- Important to note: Workload will be much more than in school
- Whether you cope, adapt and succeed **depends on yourself**
- Take responsibility for your work - plan, organize, schedule class and work times each day
- Make sure you understand the work, **contact the lecturer when uncertain of what's expected**
- Make friends with other students who share your goals
- Use every opportunity to learn and develop



# Thank you!

## Look out for information sessions in February

## All of the best with your studies!

